



Media Contact

Gina Costa
Phone: 574-631-4720
Fax: 574-631-8501
PO Box 368
University of Notre Dame
Notre Dame, IN 46556
gcosta@nd.edu

University of **NOTRE DAME**

FOR IMMEDIATE RELEASE

Solidary and Solitary: The Pamela J Joyner and Alfred J Giuffrida Collection

Snite Museum of Art, University of Notre Dame

August 18, 2018 – December 15, 2018

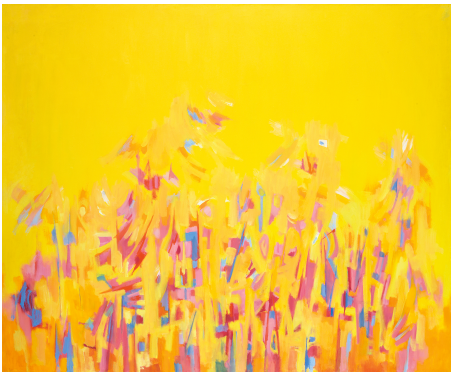
Notre Dame, IN –The Snite Museum of Art will exhibit a major nationwide touring exhibition beginning Saturday, August 18, 2018 *Solidary and Solitary: The Pamela J Joyner and Alfred J Giuffrida Collection*. This exhibition offers a new perspective on the critical contribution black artists have made to the evolution of visual art from 1940s through to the present moment. Curated by noted art historians **Christopher Bedford** and **Katy Siegel**, this will be the first large-scale public exhibition to bring together a vital lineage of visionary black artists. Commencing in the mid-twentieth century with Abstract Expressionist Norman Lewis, the show will trace a line through some of the most celebrated artists working.

Drawing on the Joyner/Giuffrida collection's unparalleled holdings, a central theme will be the power of abstract art as a profound political choice, rather than a stylistic preference, for generations of black artists. The exhibition will demonstrate how abstraction has declared individual freedom; a resistance to the imagery of racist mainstream culture on the one hand, and pressures to create positive representations of black Americans on the other.

Ranging across 70 years, *Solidary and Solitary* will reveal a rich and complex history woven from the threads of artistic debates about how to embody blackness; social struggle and change; migrations and the international African diaspora. Placing a spotlight on individuals' pursuit of creative

freedom in different eras and geographical contexts, highlights will include works by an array of artists that fuse the social and the abstract in visceral ways, including Sam Gilliam, Norman Lewis, and Kevin Beasley, among many others. Placing a spotlight on individuals' pursuit of creative freedom in different eras and geographical contexts.

Solidary & Solitary: The Joyner / Giuffrida Collection is presented by The Helis Foundation and organized by the Ogden Museum of Southern Art and The Baltimore Museum of Art.



Norman Lewis. *Afternoon, 1969*. © Estate of Norman W. Lewis. Courtesy of Michael Rosenfeld Gallery LLC, New York, NY

If you would like high-resolution images or in-depth information please contact Gina Costa at [mail to:gcosta@nd.edu](mailto:gcosta@nd.edu)

ALL PROGRAMS ARE FREE AND OPEN TO THE PUBLIC.

The Snite Museum of Art, University of Notre Dame

The Snite Museum of Art is located on the campus of the University of Notre Dame, near South Bend, Indiana. Museum hours are 10:00 a.m.–5:00 p.m., Tuesday through Friday; and noon–5:00 p.m. Saturday and Sunday. Admission is free. Museum information is available at 574-631-5466 or at the Museum's website: sniteartmuseum.nd.edu. Driving directions and parking information are available at <http://nd.edu/visitors/directions/>. Find us at inthebend.com and facebook.com.

The Snite Museum of Art is founded on the principle that art is essential to understanding individual, shared, and diverse human experiences and beliefs. The Museum encourages close looking and critical thinking to stimulate inquiry, dialogue, and wonder for audiences on campus and beyond. Fundamental activities include developing and stewarding an art collection, creating and sharing knowledge, serving our communities, and exploring the spiritual dimensions of art—all in support of the University of Notre Dame's Catholic mission.



566 words

7/9/2018