



SNITE MUSEUM *of* ART

Calendar of Events



The Museum's K-12 School program provides tours to the many school corporations in the area, such as the South Bend Community School Corporation, School City of Mishawaka, and the Penn-Harris-Madison School Corporation, as well as schools in southwestern Michigan.



Notre Dame students are trained to provide guided tours of art exhibitions to their peers enrolled in Spanish, French, and Italian language classes, Writing and Rhetoric classes, and Moreau First Year Experience classes.

Front cover: Paul Henry (Irish, 1876–1958), *Roadside Cottages (detail)*, n.d., Oil on board. Gift of the Donald and Marilyn Keough Family, 2018.005.004 © 2019 Estate of Paul Henry/Artist Rights Society (ARS), New York/IVARO, Dublin
 Back cover: Alen MacWeeney (Irish, b. 1939), *Day Flynn and his Cats, Labre Park, Dublin*, 1967, Gelatin silver print. Gift of Douglas J. Wetmore, '79, 2014.021.016

FROM THE DIRECTOR



AS ART LOVERS, we likely remember our first significant visit to a museum. Perhaps we even cherish the memory of a work that left a deep impression early on. Last year we had record attendance for students visiting the Museum. One suspects those visits may have been memorable for many and that, years from now, they may recall a painting, sculpture, or photograph that moved them.

Specifically, 597 Notre Dame classes came to the Museum, totaling 9,787 student visitors with over 3,000 more visiting for a program or event. For public programs, such as our K-12 tours, there were 10,218 student visitors. In broad terms, that translates to more than 20,000 young minds and imaginations inspired, hearts and spirits uplifted. Extraordinary.

This vital educational component of the Museum is shepherded by our vibrant staff in both academic and public programs. Their work is further enhanced by tours conducted by thoughtfully trained docents and student gallery teachers. We sincerely thank them all.

We also owe a genuine debt of gratitude to the many Friends of the Snite Museum of Art. Membership in the Friends and attendance at the Christmas Benefit Dinner and other annual events support our public programs and education staff. It is through their generosity that many lives are touched and enhanced.

In many ways, the work of the Education Department and support of the Friends brings the mission of the Museum to life:

Founded on the principle that art is essential to understanding individual, shared, and diverse human experiences and beliefs, the Museum encourages close looking and critical thinking. Experiences with notable, original works of art are intended to stimulate inquiry, dialogue, and wonder for audiences across the academy, the community, and around the world—all in support of the University of Notre Dame's Catholic Mission.

To look, think, inquire, dialogue, and wonder—what noble and necessary endeavors of the human experience. Through the collections we curate and the exhibitions we mount, we hope every visit is memorable.

Enjoy this latest issue. It's filled with news of acquisitions, exhibitions, programs, and updates across the Museum.

May our paths cross soon.

— Joseph Antenucci Becherer, Ph.D.
 Director and Curator of Sculpture

Calendar of Events

OCTOBER – DECEMBER 2019



The Big Draw: Snite Sketches Wall

DURING NORMAL MUSEUM HOURS THROUGH OCTOBER 31

In celebration of the international Big Draw Festival, during October free drawing materials will be available in the first-floor stairwell so you can satisfy your creative itch. Grab a drawing board, a few sheets of paper, and some pencils then head into the galleries to sketch one of your favorite works of art. Take your creation with you or add it to the stairwell gallery display wall so you can say your work hangs in a museum.



Fall Family Night

**THURSDAY, OCTOBER 24
5:30-7:00 p.m.**

Ghosts and goblins are welcome at the Museum the week before Halloween. Join us for a frighteningly fun family evening filled with more treats than tricks. Enjoy festive art making, trick-or-treating in the galleries, a Halloween-themed dance party, and refreshments for all. Costumes are encouraged.

Snite@Nite: Snite Fright for ND Students

**THURSDAY, OCTOBER 31
5:30-7:00 p.m.**

Come to the Snite Museum of Art for a frightening night of art-related Halloween fun! Screen-print a t-shirt with an exclusive, terrifying design. Eat delicious fall treats. Listen to scary stories in the galleries. Explore the cobwebbed corners of the museum on a murder mystery adventure. Drop-by for a ghoulishly good time.

This program is organized by the Snite Student Programming Committee.



Reading by Irish Poet John Deane

**FRIDAY, NOVEMBER 1
3:30-4:30 p.m.**

Hear a small selection of the works by the celebrated Irish poet and novelist, John Deane read in the "Looking at the Stars": Irish Art at the University of Notre Dame exhibition galleries. A reception and book sale/signing will follow in the adjacent Great Hall of O'Shaughnessy Hall.



Lecture by Dr. Brendan Rooney Head Curator and Curator of Irish Art, National Gallery of Ireland

"Finding the Irish: The Challenges of Displaying a National Collection"

**TUESDAY, NOVEMBER 5
5:30-6:30 p.m.**

In celebration of the exhibition "Looking at the Stars": Irish Art at the University of Notre Dame, join Dr. Brendan Rooney for an exploration of the challenges of developing a national narrative through art.

ArtWords

**THURSDAY, NOVEMBER 7
6:00-7:30 p.m.**

Produced and emceed by Pam Blair of the Poetry Den and University of Notre Dame senior Angelle Henderson, the evening begins with performances by featured poets La Tonya Giffin and Roger Chrastil from the community and Dionte West and JoJo Lee from Notre Dame. The event ends with an open mic session (register starting at 5:45 p.m.).

The Music Village @ the Snite: Irish Music Jam Session

**SATURDAY, NOVEMBER 9
12:30-2:00 p.m.**

All ages and those of all skill levels are welcome to this free Irish-themed acoustic jam session. Bring your own musical instrument or borrow one provided that day by The Music Village. Come to play, sing, or just listen.

Artful Yoga

**THURSDAY, NOVEMBER 14
&
THURSDAY, DECEMBER 12
5:30-6:30 p.m.**

Take an hour out of your week to relax and recharge through Artful Yoga. Join yoga instructor Steve Krojnowski for free yoga classes that introduce you to a work of art to reflect on during the session. Capacity is limited. All levels are welcome. Bring your own mat or borrow one of ours. Co-sponsored by RecSports.



Snite in the Snow

**THURSDAY, DECEMBER 19
5:30-7:00 p.m.**

'Tis the season for holiday cheer. Bring your family to revel in the holiday spirit with ornament making inspired by works from the collection, festive refreshments, and seasonal music performed in the galleries by the South Bend Symphony Orchestra's Symphony-to-Go wind quintet.



Study Days at the Snite Museum

**FRIDAY, DECEMBER 13
10:00a.m. to 5:00 p.m.**

**&
SATURDAY, DECEMBER 14
Noon until 5:00 p.m.**

The Museum galleries will be made available to students as inspiring and quiet study spaces before final exams. Tables, chairs, and outlets will be provided in select galleries. Complimentary light refreshments are provided for consumption in the tiled Entrance Atrium and Decorative Arts Gallery while quantities last.

EXHIBITIONS

"Looking at the Stars": Irish Art at the University of Notre Dame

On view through December 14, 2019

The fall exhibition, "Looking at the Stars": *Irish Art at the University of Notre Dame*, brings together resources from across campus and beyond to explore Ireland's rich artistic heritage. On view are prime examples of paintings by canonical artists, such as Jack B. Yeats, Roderic O'Connor, and Paul Henry, collected by Donald and Marilyn Keough in addition to Modern and Contemporary works drawn from the Rare Books and Special Collections at Hesburgh Libraries and The O'Brien Collection in the Chicago area. A large selection of photographs by Irish-born artist Alen MacWeeney

is presented for the first time, adding another dimension to our understanding of Irish art and its contributions to the dialogue about geography and history in constructing national identity. Prints by the eccentric artist James Barry and the renowned mezzotint printmaker Thomas Frye offer us a glimpse into the eighteenth-century conditions under which Irish artists labored.

A full complement of related programs organized in collaboration with the Keough-Naughton Institute of Irish Studies is described in the Calendar pages of this publication, and

available on our events section of the sniteartmuseum.nd.edu website. Performances and lectures offered by visiting scholars and artists bring new light and voices to bear on Ireland's spirited culture.

This temporary exhibition at the Snite Museum of Art is made possible with support from the Kathleen and Richard Champlin Endowment for Exhibitions and organized in partnership with the Keough-Naughton Institute for Irish Studies.



Alen MacWeeney



Jack B. Yeats (1871-1957), *Driftwood in a Cave*, 1948
Oil on canvas, 14 × 21 inches. Gift of the Donald and Marilyn Keough Foundation, 2018.005.003

Timed to coincide with this landmark exhibition, the Museum is honored to announce the publication of *The Donald and Marilyn Keough Collection of Irish Art*. Edited by our own Curator of European Art, Cheryl K. Snay, Ph.D., this full color catalogue explores the entirety of the Donald and Marilyn Keough Family gift of art to the University of Notre Dame. In addition to the important contributions of Snay, essays and entries by scholars (Patrick Griffin, Frances Jacobus-Parker, Morna O'Neill, and Maria Rossi) are included. Although the exhibition, "Looking at the Stars": *Irish Art at the University of Notre Dame*, is but a brief endeavor, this important

volume is a lasting and insightful commemoration of the Keough's magnificent gift. The catalogue is made possible by a generous donation from the Keough Family Foundation through Snite Advisory Council member, Eileen Keough Millard.



Alen MacWeeney, Irish, born in 1939, *Johnny Cassidy and Big Dan Flynn, Goresbridge*, 1967
Gelatin silver print, 12 ½ × 18 ½ inches. Gift of Douglas J. Wetmore '79, 2014.021.015.

EXHIBITIONS

Divine Illusions: Stature Paintings from Colonial South America

January 18 – May 16, 2020

In eighteenth-century Spanish America, sculpted images of the Virgin Mary were frequent subjects of paintings. Some of these “statue paintings” depicted sculptures famed for miraculous intercession in medieval Spain. Others captured the likenesses of statues originating in the Americas and similarly celebrated for their divine intervention. Like the statues they portrayed, the paintings, too, were understood to be imbued with sacredness and were objects of devotion in their own right.

Drawn from the extraordinary holdings of the internationally renowned Carl & Marilyn Thoma Art Foundation, this exhibition focuses on statue paintings of the Virgin from the Viceroyalty of Peru, a part of the Spanish Empire encompassing much of Andean South America. It centers particularly on works produced in Cuzco (Peru) and artistic centers in the vicinity of Lake Titicaca and explores the European and American dimensions of the phenomenon, iconographic variations in the genre, and what these works of art reveal about sacred imagery and its operation in Spanish colonial South America. The identities of the painters and patrons of these works remain largely unknown, but certainly some of them were native Andeans.

The paintings in the exhibition cohere not only in their subject matter and place of production, but also in the painters’ meticulous treatment of the lavish dresses, mantles, jewels, and crowns that adorned the sculpted images. These details enhance their illusionistic effects, simulating the presence of the dressed statue itself. By making divine images from distant places present in colonial Peru and positioning them—through painting—in the company of sacred sculptures from the Americas, works in this genre traced a transatlantic spiritual geography conceived in eighteenth-century Spanish America and extending from the Andes to the Pyrenees and beyond.



The display of paintings, as well as archival and didactic materials, is curated by Professor Michael Schreffler, Ph.D., of the University of Notre Dame’s Department of Art, Art History & Design.

The exhibition is made possible with support from the Fritz and Mildred Kaeser Endowment for Liturgical Art.

Unidentified artist, *Our Lady of the Rosary of Pomata*, 1669, Oil on canvas. Courtesy of the Carl & Marilyn Thoma Art Foundation, photo by Jamie Stukenberg.



Unidentified artist, *Our Lady of the Sagrario of Toledo*, 17th century, Oil on canvas. Courtesy of the Carl & Marilyn Thoma Art Foundation, photo by Jamie Stukenberg.



Unidentified artist, Cuzco, Perú, *Our Lady of the Rosary as a Pilgrim*, Second half of 18th century, Oil on canvas. Courtesy of the Carl & Marilyn Thoma Art Foundation, photo by Jamie Stukenberg.

2020 MFA Candidates Thesis Exhibition

April 14 – May 16, 2020

Public Reception

Friday, April 17 from 5:00 – 7:00 p.m.

This annual exhibition is comprised of the culminating thesis projects created by the students graduating with an MFA degree from the University of Notre Dame Department of Art, Art History & Design.

It is typically provocative and demonstrates a broad awareness of the themes and processes of Contemporary art. Museum visitors are often challenged and always intrigued by the aspiring graduates’ creations which range from industrial and graphic design projects, videos, and complex multi-media installations, to more traditional art forms such as paintings, photographs, prints, ceramics, and sculpture.

This temporary exhibition is made possible with support from the Walter R. Beardsley Endowment for Contemporary Art.



A Museum visitor viewing one of the many sections that comprised the exhibition installation by Stephen Lemke, MFA Sculpture 2019.

RECENT ACQUISITIONS

European Art



In 2016 Michael and Susie McLoughlin graciously loaned the Snite Museum their monumental replica of the ancient Hellenistic sculpture *Laocoön and His Sons*. The grand sculpture serves as the centerpiece of the second-floor Eighteenth Century Gallery that explores Enlightenment philosophers' interests in antiquity, virtue, history, aesthetics, and politics. The McLoughlins recently converted their loan into a gift, ensuring that Notre Dame students and faculty will have access to this notable primary resource for generations to come.

The McLoughlin sculpture, weighing about 2,500 lbs., is believed to have been carved between 1650 and 1780 and is modelled after the first century C.E. marble version on view in the Vatican Museums. It depicts a scene from the Roman poet Virgil's *Aeneid* describing the death of the Trojan priest Laocoön who warned the Trojans about the Greek's ruse of the wooden horse. Angered by his interference, the goddess Athena sent snakes to kill the meddling priest and his sons.

The original sculpture was recorded in the Emperor Titus's palace in the first century C.E. after which it was lost. In 1506, however, a farmer digging a well in his vineyard found the sculptural group and sold it to Pope Julius II who displayed it in the belvedere of the Vatican Palace where artists from around Europe flocked to see it. Aristocrats and wealthy patrons admired the sculpture and asked artists to make copies for them. Replicas were made in bronze and in marble and attest to the sculpture's appeal.

The date of the McLoughlin Laocoön group is assigned due to the type and color of the marble and the evidence of tool marks visible in areas such as the curls on the heads. The pointing machine was a device invented in the late eighteenth century and in use widely after 1780. It was used to transfer measurements from an original statue to another block of stone for the purposes of copying. Its use precluded the drill marks that are clearly visible on the McLoughlin sculpture.

Used by classes as diverse as studio art, philosophy, archeology, and neuroscience, *Laocoön and His Sons* promises to offer the Notre Dame community continued opportunities for learning and enjoyment.

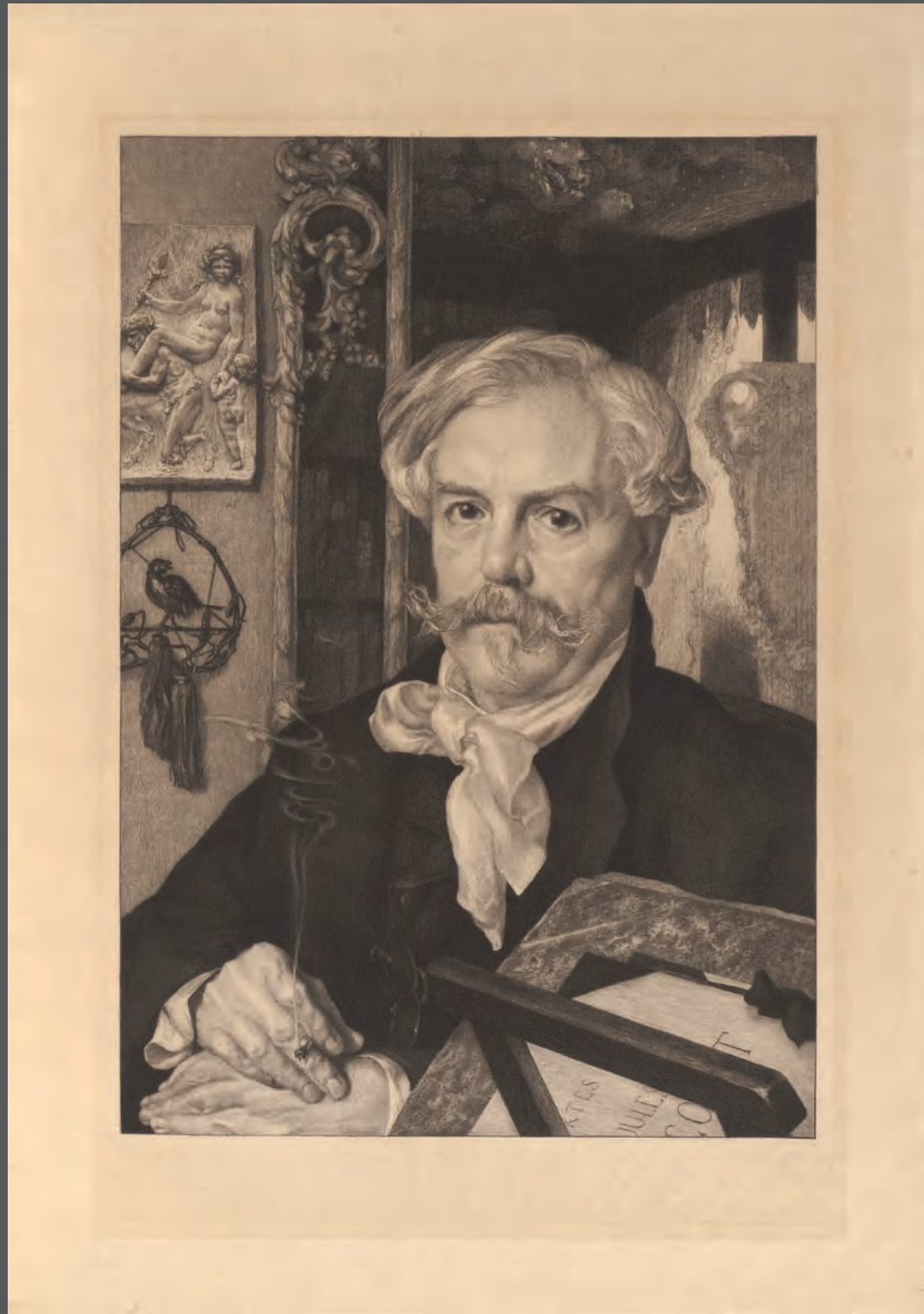
Unrecorded Italian artist, *Laocoön and His Sons*, 18th century
Marble, 62 ¼ x 53 ¾ x 27 ¼ inches. Gift of Michael and Susie McLoughlin, 2019.007

The Snite Museum's collection of eighteenth-century porcelain continues to grow with the recent acquisition of a black-ground coffee pot made at the Real Fabbrica Ferdinanda in Naples around 1795 through the generosity of Virginia A. Marten. While the Snite Museum's holdings include several examples of teapots, this is the first example of a porcelain coffee pot. The reserves on the pot show regional costumes of the Kingdom of

Naples and Sicily. One of the scenes shows a couple from the village of Villa Badessa in Abruzzi, a settlement founded in 1743 after ninety-eight Eastern Orthodox Christians had migrated from a Muslim village in southern Albania. A series of watercolor studies made at the time correspond to the views shown here. The community still exists today and is the home of the only Greek Orthodox church, Santa Maria Assunta, in the region.



Real Fabbrica Ferdinanda, Naples, *Black-ground Coffee Pot*, ca. 1795
Soft-paste porcelain, 8 ½ x 6 7/8 inches (overall).
Virginia A. Marten Endowment for Decorative Arts, 2019.009



Two new nineteenth-century etchings acquired with the support of Rebecca Nanovic Lin strengthen the Snite Museum's important print collection. Félix Bracquemond's *Portrait of Edmond de Goncourt*, a historian of eighteenth-century art partly responsible for the rococo revival during the late 1800s and a proponent of *japonisme*, is a tour de force of printmaking technique. References to the sitter's interests are seen in the plaster cast of a relief and an Asian *objet d'art* in the background. The silk cravat loosely tied at his throat and the wispy curls of cigarette smoke wafting in the foreground lend a casual and immediate air to the scene.

Félix Bracquemond (French, 1833–1914), *Portrait of Edmond de Goncourt*, 1882
Etching on Japan paper, 24 x 16 7/8 inches (sheet). Rebecca Nanovic Lin '87 Fund, 2019.012



Eugen Napoleon Neureuther (German, 1806–1882),
Little Briar Rose or Sleeping Beauty, 1836
Etching on wove paper, 31 1/4 x 23 1/8 inches (sheet).
Rebecca Nanovic Lin '87 Fund, 2019.003

In keeping with the spirit of our important temporary exhibit, *"Looking at the Stars"*, we are pleased to add to the permanent collection Irish artist Evie Hone's gouache design for a stained glass window in the baptistry of St. Nathi's church in Dundrum, County Dublin, made in 1933. It is on view in the fall exhibition *"Looking at the Stars": Irish Art at the University of Notre Dame*. Along with Mainie Jellett and Mary Swanzy, Hone was credited with introducing avant-garde trends into Ireland. Her facility with Cubism transferred easily to her new interest in stained glass designs.



Evie Hone (Irish, 1894–1955), *Madonna and Child [Design for a Stained Glass Panel]*, 1933
Gouache and watercolor, 12 5/8 x 9 1/2 inches (image).
Fritz and Mildred Kaeser Endowment for Liturgical Art, 2019.011

The second purchase made possible by Rebecca Nanovic Lin is Eugen Neureuther's monumental sheet depicting a Brothers Grimm's fairy tale. *Sleeping Beauty* is a testament to the artist's skill as a printmaker and the importance of folk literature as an authentic source of Truth for Romantic artists. With details so profuse as to be dizzying, Neureuther offers a visual synopsis of the text, printed so small at the bottom of the image that it is almost illegible. The climax of the story—Sleeping Beauty being kissed by the prince—is placed at the center with the other characters and the instrument of her demise arranged around her in a circular pattern. The heavy foliage described by the authors as covering the castle weaves all the elements together like a tapestry.

Photographs



Lewis Carroll (Charles Lutwidge Dodgson), (English, 1832-1898), "I Like Pictures"—Ella Monier-Williams, 1866
Albumen print from wet collodion negative, 4 ½ x 5 ½ inches (Sheet), Milly and Fritz Kaeser Endowment for Photography, 2019.013

Aside from his career as an Oxford University mathematics professor and author of satire and fantasy, the Reverend Charles Lutwidge Dodgson was an amateur photographer. Over twenty-five years he made about 3,000 photographs. Most are portraits of family, friends, and academic colleagues.

In the summer of 1862, Dodgson and a friend were minding the three daughters of Henry Liddell, the dean of Christ Church College. While on an afternoon trip on the Thames River the children begged for a story, and Dodgson made up an adventure involving Alice, the middle sister. He continued this tale on later visits, and with the girls' encouragement he wrote it down. Dodgson published *Alice's Adventures in Wonderland* in 1865, under his nom-de-plume, Lewis Carroll. This is also the name by which his work as a photographer is best known.

The following spring Dodgson was a dinner guest at the home of Monier Monier-Williams, the Oxford professor of Sanskrit. Soon after Mrs. Monier-Williams brought her children to his studio to be photographed. The artist made thirteen photographs of eight-year-old Ella Monier-Williams in different poses, moods, and costumes. Here she sits alone on the settee in his Badcock's Yard studio in Oxford, quietly absorbed in a picture book. The image captures a moment of private pleasure, and conjures universal memories of childhood. Dodgson gave this print to his sitter, and it was one of a few that she kept throughout her life. At some point, in an adult hand, she inscribed a title "I Like Pictures" on the back of the print.

Paintings



A recent gift of a large ink painting by the Chinese artist, Gao Xingjian, from Mrs. Beverly O'Grady assists the Snite Museum in its efforts to culturally diversify and expand its Modern and Contemporary Art Collection

Gao Xingjian is a novelist, playwright, painter, photographer as well as film and theatre director; sustaining a successful career both in academic and artistic disciplines. Born in Jiangxi province, Gao studied French at the Beijing Foreign Studies University and was the first Chinese individual to receive a Nobel Prize in Literature in 2000.

Gao Xingjian (Chinese, b. 1940), *Suspens*, 2007, Ink on paper, 75 ½ x 64 x 1 ¼ inches framed. Gift of Mr. Robert E. (ND '63) and Mrs. Beverly (SMC '63) O'Grady, 2019.008

Gao's paintings have been included in thirty exhibitions around the world. He has lived in France for over thirty years and his philosophy continues to be influenced by his Chinese aesthetics and Buddhism. "Painting begins where language fails" is one of Gao's famous quotes which succinctly characterizes his art and his philosophy in life. The painting, *Suspense*, is typical of his paintings, which reference the long tradition of Chinese ink paintings in his choice of materials but not his subject matter. Gao's depictions of space and depth in his paintings are not direct

observations of the physical world around him. Rather they express the spatial dimensions of his inner self. He often portrays his inner mindscape; a world invisible to the human eye. A small silhouette is sometimes included to reference an onlooker who seeks a deeper meaning in life.

This painting was exhibited in the September 2 to November 11, 2007 exhibition, *Between Figurative and Abstract: Recent Paintings by Gao Xingjian*, organized by the Snite Museum of Art and made possible with support from Mr. and Mrs. Robert E. O'Grady.

YIELD Magazine Online

In June the latest issue of *YIELD*, Snite Museum of Art's semi-annual online magazine for photography, was released. Artist interviews in the eighth issue featured Abelardo Morrell discussing his recent photo book, *Flowers For Lisa*, and Osamu James Nakagawa discussing a new take on a previous body of work exploring the American drive-in theatre.

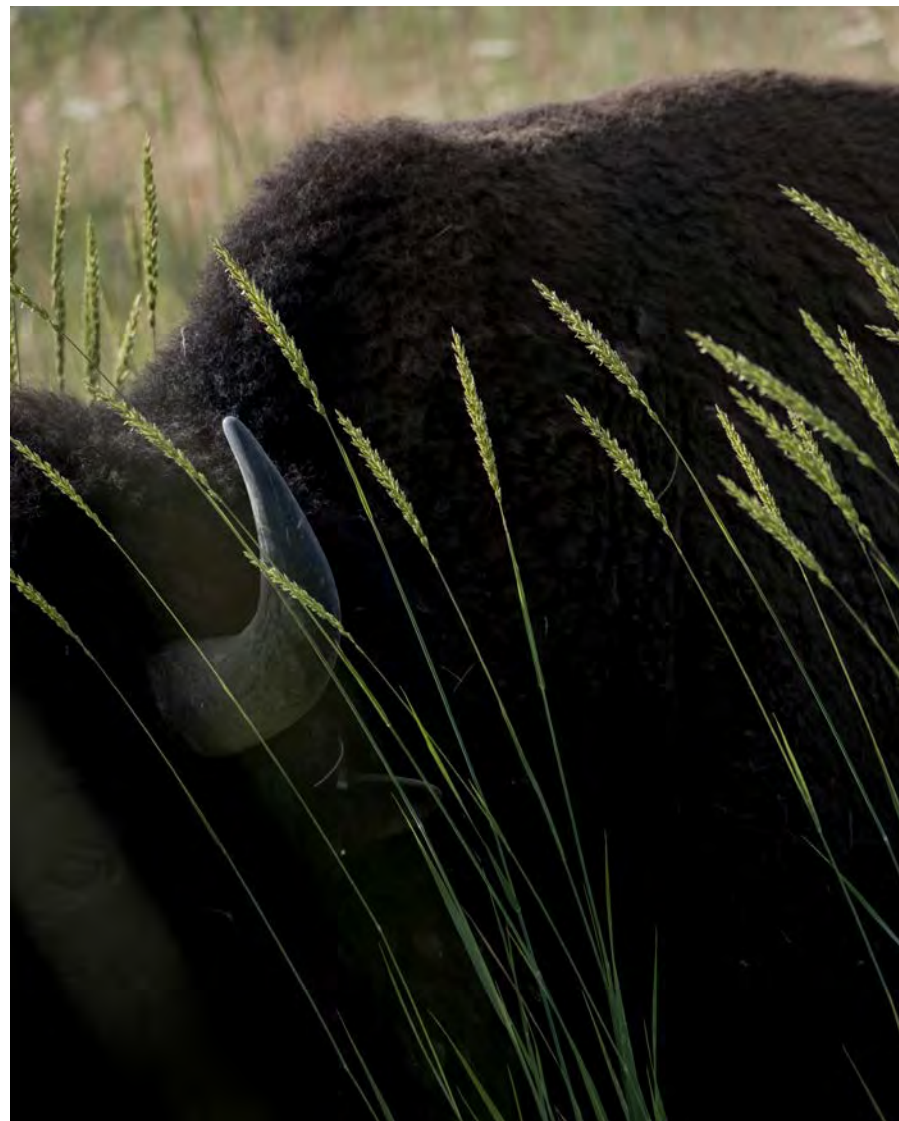
In addition to publishing *YIELD* the Snite Museum has expanded into other areas supporting the photographic arts. Summer 2019 was the second year for a two-person artist residency program organized in collaboration with UNDERC (University of Notre Dame's Environmental Research Center). Each artist spends two weeks at one of two UNDERC locations; either on the Flathead Reservation in Montana or in the Upper Peninsula of Michigan. In 2019, Margaret LeJeune was selected and spent two weeks at the remote Michigan site and Ryan Dorgan was selected for the one in Montana. The artists engaged with students, faculty, and the environment to build a body of photographic work specific to their location. A selection of the photographs from each of their residencies will appear in forthcoming issues of *YIELD*, and their work will become part of the Snite Museum permanent collection.

We will continue working with students, staff, and additional contributors to put together our next issue. Look for *YIELD N°9* in December and visit the website at yieldmagazine.org for current and past issues.

Additionally, if you have an interest in fine art photography and photo books the magazine collects many portfolios by a variety of contemporary photographic artists. Contact Michael Rippey (mrippey@nd.edu) if you would like to make a donation.



Margaret LeJeune (American, b. 1976), *Bird Song Reflector*, 2019, Digital pigment print



Ryan Dorgan (American, b. 1990), *Untitled*, 2019, Digital pigment print

New Snite Advisory Council Members

New council member and artist **Jaclyn Dooner** received her BFA from Notre Dame in 2003 and MFA from New York Academy of Art in 2015. She resides in Brooklyn, New York, with husband Simón Ramirez Restrepo and is very involved with both Art Expressions and Mimi's Magic Fund. Art Expressions provides art workshops for outpatients and caregivers at Memorial Sloan Kettering Cancer Center in New York City. Mimi's Magic Fund supports both Art Expressions and rare cancer research at Memorial Sloan Kettering Cancer Center.

Brigid Boyle is filling the Young Alum position formerly held by Anna K. Rogers Sunderlin, whose three-year term has ended. Boyle received her bachelor's and master's degrees in Art History from the University of Notre Dame and is currently enrolled at Rutgers University in their Ph.D. program. She is also the Block Family Foundation Doctoral Fellow at the Nelson-Atkins Museum of Art. While enrolled at ND, Boyle became familiar with the Snite Museum from her student research position under the guidance of Curator of European Art, Cheryl K. Snay, Ph.D. Brigid and her husband Andrew, a Mechanical Engineer, recently welcomed the birth of their first child, Maeve.

The third new council member, **Carly K. Murphy**, was also a student employee of the Snite Museum while earning her bachelor's degree and master's degree in Art History from the University of Notre Dame. After graduating in 2003 Murphy earned a certificate from Sotheby's Institute of Art and then joined their staff. Murphy is currently serving as one of their Vice Presidents. As a 2002 graduate of the ND Law School, her husband John O. Murphy, also has a connection to our campus.



Dooner, Boyle, and Murphy at the Fall 2018 meeting.

In Memoriam: Marilyn B. Alsdorf

The Snite Museum mourns the passing of one of the founding, and long-serving, members of the Snite Advisory Council, Marilyn Bruder Alsdorf, who died at the age of 94 on August 1. With her husband, James W. Alsdorf, and on her own since his passing in 1990, she has been a passionate art collector and patron of the arts for both Chicago and Notre Dame. She served on boards and helped shape the collections of The Art Institute of Chicago, the Museum of Contemporary Art, the University of Chicago's Smart Museum of Art, and the Leigh Block Museum of Art at Northwestern University.



Marilynn and James Alsdorf were tremendously generous as well to the Snite Museum of Art. From 1967 through 2016 the Alsdorfs donated over 370 works of art to bolster its Asian, Ancient, and Mesoamerican Collections and endowed a fund to purchase Ancient, Medieval, and Early Renaissance Art.

We shall miss her good counsel, impeccable eye for collecting art, expansive knowledge of the art of many cultures, and send our condolences to her children and grandchildren.

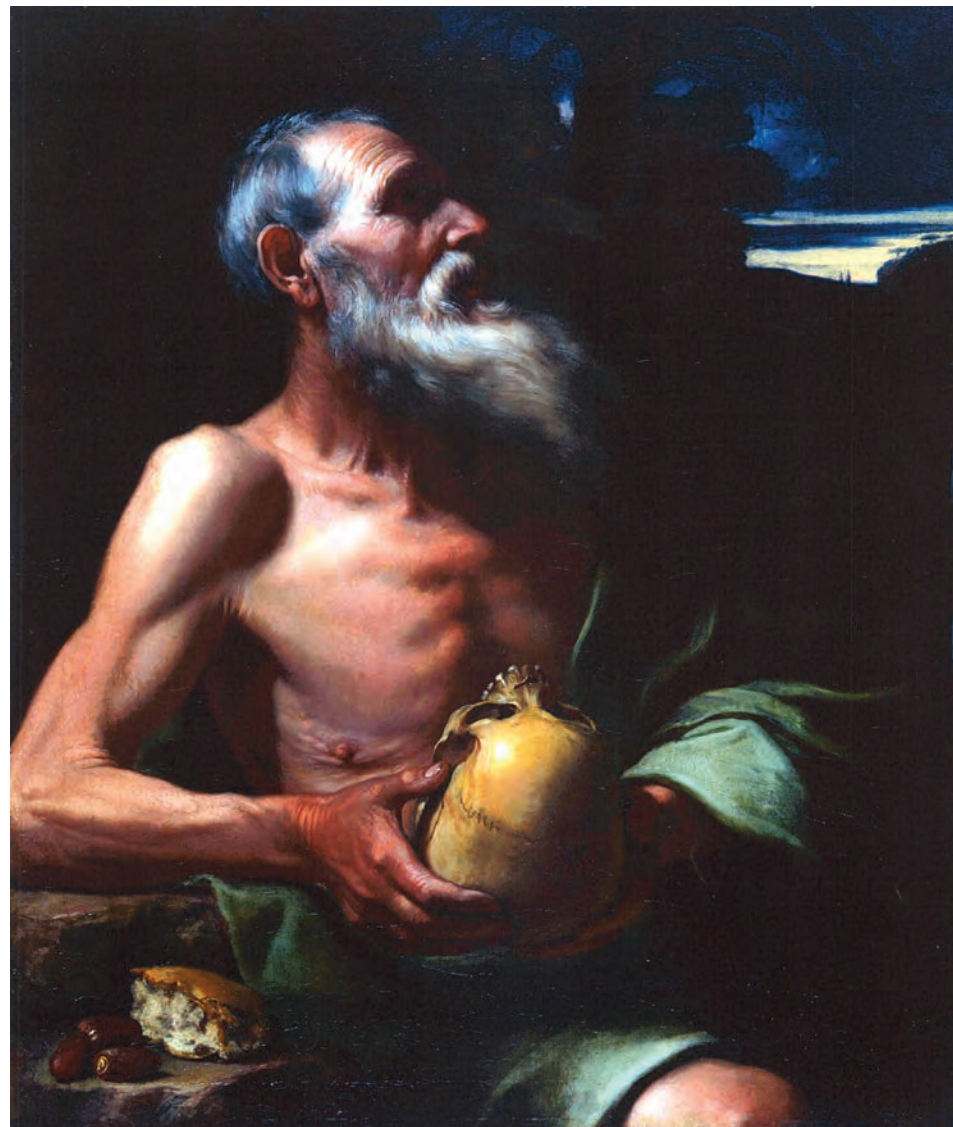
MUSEUM NEWS

Ribera Painting on Loan from Cummins Family Collection

The Snite Museum of Art is pleased to announce an extraordinary long-term loan from the Cummins Family Collection of the painting *St. Paul the Hermit* by Jusepe de Ribera (Spanish, 1591-1652). Known as “lo Spagnoletto” (The Little Spanish One), Ribera is recognized as one of the great Baroque masters. He left Spain for Italy to travel to Naples, Parma, and Rome to study the work of famous Italian artists from the Renaissance, such as Raphael (Italian, 1483-1520) as well as a few of his famous contemporaries, such as Annibale Carracci (Italian, 1560-1609), Michelangelo Merisi da Caravaggio (Italian, 1571-1610) and Guido Reni (Italian, 1575-1642).

This loaned painting of *St. Paul the Hermit* by Ribera is typical of followers of Caravaggio in its dramatic lighting and raw, natural depiction of the physical effects of the years of fasting and an ascetic lifestyle. From the saint’s legend, the painting illustrates the daily delivery of a half loaf of bread and three dates by a raven. The saint grasps an upturned skull with his sunburned hands as he looks up and to the right, his gray beard and the tired skin of his torso are indicative of his advanced age. These motifs—the haggard depiction of an elderly bearded ascetic, the remarkably natural portrayal of the skull, and the isolation and devotion of the subject—were to become hallmarks of Ribera’s work.

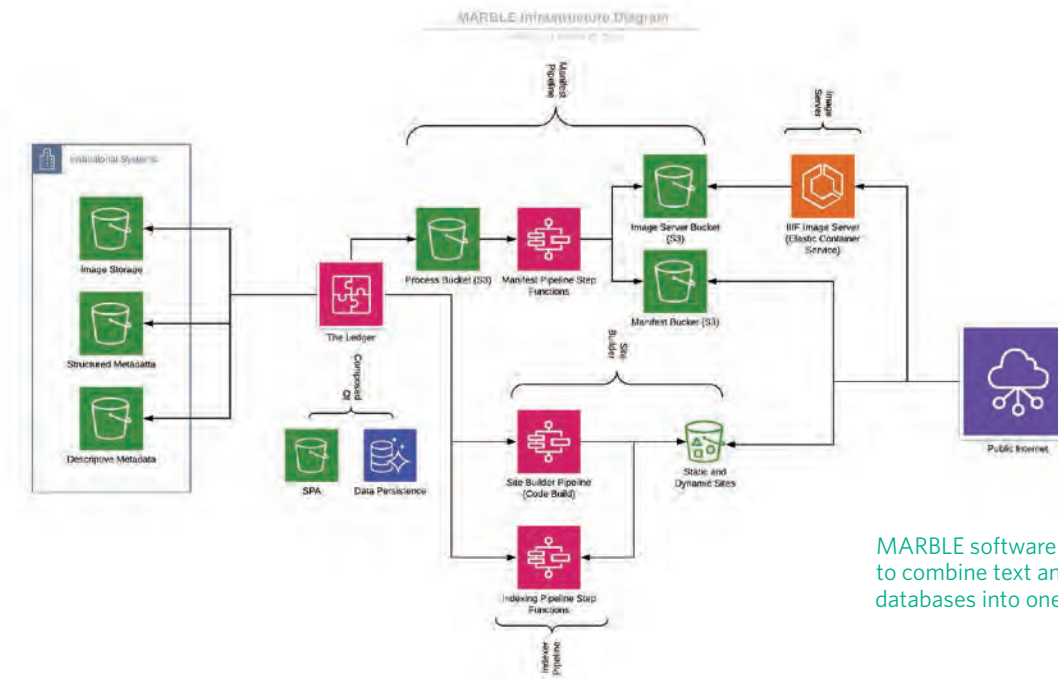
“Ribera’s half-length portrait of a saint is a stunning example of Counter-Reformation devotional art popular in the seventeenth century, and it richly complements the University’s collection of Italian religious narratives,” said Cheryl Snay, Curator of European Art at the Snite Museum of Art. “Moreover, the artist’s emphatic naturalism and dramatic tension make it as compelling now as it was four centuries ago.”



Jusepe de Ribera (called “lo Spagnoletto”), Spanish, 1591-1652, *St. Paul the Hermit*, ca. 1614-1615, Oil on canvas 34 ¾ x 29 inches. Image courtesy of the Cummins Family Collection.



Grant Update



MARBLE software infrastructure diagram of how to combine text and images from three different databases into one searchable website template.

Mellon Grant Project team members from the Hesburgh Libraries and the Snite Museum of Art continue working towards a unified, searchable, web portal for objects in their collections. ND students and faculty have long requested this online tool. The final version of the platform software will be open source and made available to other university art museums and libraries.

Last spring, Hesburgh Libraries’ software developers built a simple version of the website with a small number of objects from the Museum and Library. The Outreach Specialist shared the prototype with campus users to get their impressions on the site’s usability and features.

On the whole, users expressed excitement about the ability to discover the University’s cultural collections online and the option to use the image tools for closer viewing of artwork and texts. Users provided helpful feedback about how to improve

the layout as well as how to make the site’s terminology understandable to a non-expert audience. The team will be incorporating these changes before showing the next version to more users in November.

The two Notre Dame students hired this summer with grant funds were Caila Lindsey, a rising senior, who worked to standardize publication records in the museum’s content management system. Liam Maher ’18 and now a graduate student at the University of Oregon, verified details about past exhibitions for the bibliography section. These projects allowed the students to gain experience in a museum setting, learn about the complexities of a database system, and contribute their efforts to the creation of a future research tool for their fellow ND students and scholars world-wide.

FRIENDS OF THE SNITE MUSEUM OF ART

FALL BUS TRIP To the Art Institute of Chicago

The Friends of the Snite Museum are going on an exciting daytrip to the **Art Institute of Chicago** on Friday, November 8, to see the special exhibition *Andy Warhol—From A to B and Back Again*.

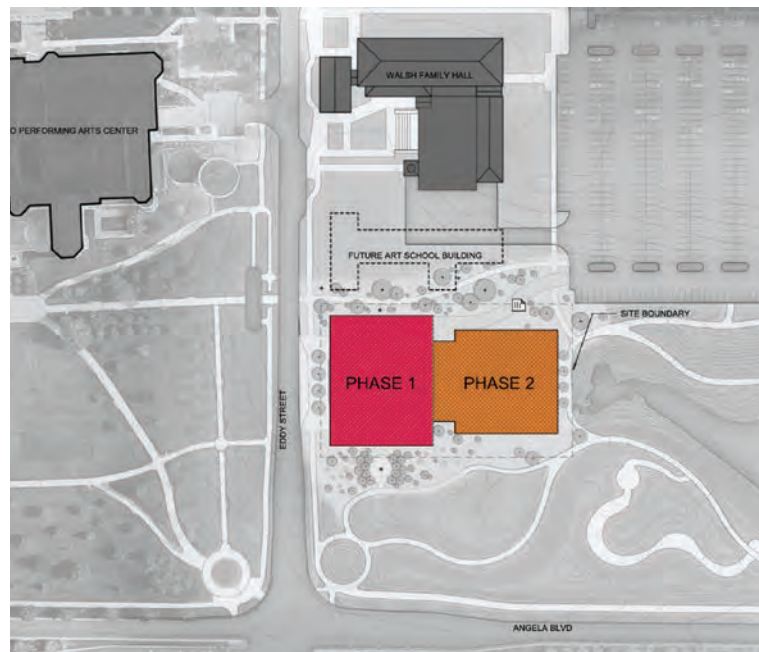
From soup cans to celebrity portraits, electric chairs to album covers, the images of Andy Warhol are among the most recognized and celebrated the world over. This major retrospective—the first to be organized by a US institution in thirty years—builds on the wealth of new research, scholarship, and perspectives that has emerged since Andy Warhol's early death in 1987. More than 350 works offer a new view of the beloved and iconic American Pop artist, not only illuminating the breadth, depth, and interconnectedness of Warhol's production across the entirety of his career but also highlighting the ways that Warhol anticipated the issues, effects, and pace of our current digital age.

We start the day's visit with this highly anticipated Warhol exhibition. The rest of the time is allotted to your own pace and preference in touring the thousands of works at the AIC.

Call the office at (574) 631-5516 for more information about this bus trip, or to become a member in order to receive a price discount and advance notice of the next one.



Andy Warhol, American, 1928-1987, *Flowers*, 1964, The Art Institute of Chicago
Gift of Edlis/Neeson Collection, © 2015 The Andy Warhol Foundation for the Visual Arts, Inc./Artists Rights Society (ARS), New York



Site of the Raclin Murphy Museum of Art at Notre Dame Selected

Staff members of the Snite Museum, the University Architect's office, and the Robert A. M Stern Architects office continue to work together to design the new art museum. It will be located in the northwest corner of the Charles B. Hayes Sculpture Park and preliminary site work for Phase I will begin this fall thanks to the generous lead gift from members of the Raclin and Murphy Families. Until the funds for the construction of Phase II are acquired from additional donors, some museum functions will continue in the current Snite Museum of Art.

Join the Friends and share your email to receive construction updates.

PLAN AHEAD FOR TRIP TO IRELAND IN 2020

Art, History and Notre Dame Football

Explore Ireland & London as our Fighting Irish kickoff the season in the 2020 Aer Lingus College Football Classic against Navy in Dublin



Tour of Ireland – Galway and Dublin

August 24 – 31, 2020

After arriving in Ireland, begin an eight-day adventure traveling from the Aran Islands and Kylemore Abbey on the west coast to Dublin and Glendalough on the east coast. Game tickets for the Notre Dame Football vs. Navy game at Aviva Stadium on August 29, luxury hotel accommodations, and MUCH more are included in this exclusive travel package.

Even if you have visited Ireland before, this is a trip-of-a-lifetime as we discover years of history, art, and Irish traditions. A new meaning to the chant - Go Irish!

Optional London Extension Tour

August 31 – September 4, 2020

While you are so close to Great Britain, add an extra stop to your unforgettable trip. Transfer to London for visits to the Tower of London, Westminster Abbey, the London Eye, the National Gallery, and the British Museum before cruising on the Thames with a spectacular closing dinner.

Make your travel plans today by securing your package through Anthony Travel. (book.anthonytravel.com/d/sniteartmuseum) Or call Eric Heike at Anthony Travel, 214-234-3083.



FRIENDS FORUM: BOARD MEMBER SPOTLIGHTS



Sharon Donlon

The Friends of the Snite Museum of Art are very pleased to introduce you to founding Friends member, previous board member, and docent, Sharon Donlon.

Born in Lake County, Indiana, Sharon was close enough to Chicago during her childhood to visit its various museums and art galleries, sparking her interest and passion for art.

When asked about her earliest interest in the arts, Sharon responded, "Beauty has always been very important to me. One of the sweetest and best gifts that our parents gave myself and my five younger brothers is the love of beauty and nature. Our whole lives they were always pointing out things that we should look at and see, and taking us to museums and galleries, and so I started very young enjoying art. When I moved here in the 1960s the art gallery on campus was the O'Shaughnessy. The people were so welcoming and I grew to just enjoy and

love it so much. Because I was hanging around a lot, I met Dean Porter who was the Director at the time. Dean and I developed a friendship and he asked me when the Snite Museum of Art began to be on the Friends of the Snite board. One day I was here and Dean said, "Sharon! You've got to come downstairs!" *The Ashbaugh Madonna* had just been delivered, So I had the joy of seeing it and sharing with Dean. We were both just so thrilled."

"One of the pieces that really stands out in my mind from when I was a docent is the large painting (Paul Wood's *Absolution Under Fire*) of Father Corby giving absolution to the soldiers at Gettysburg. It's such a powerful painting. It's also *big*, so that all of the children sitting down could see it. The painting shows Father Corby standing on that rock, and giving general absolution to the troops. What the children saw were all the people, with bowed heads, and looking very serious. It's a nice piece that's connected to Notre Dame, but it also provides a little bit of history. The children heard about Gettysburg, and know what a serious time the Civil War was in our American history."



Ivan Meštrović, Croatian-American, 1883-1962
The Ashbaugh Madonna, 1917, Wood
Gift of Mr. and Mrs. Russell G. Ashbaugh, Jr, 1973.074



Paul Henry Wood, (American, 1872-1892)
Absolution under Fire, 1891, Oil on canvas
1976.057

Angie Chamblee



"Visiting the Snite has been a highlight in my recent retirement. I worked in the First Year of Studies Office at the University for 38 years and enjoyed every minute. When the Snite first opened, I would come over to find a peaceful space, especially right after final grades came in. Now I have come full circle, finding that familiar, peaceful feeling as I walk through the various galleries." Angie continued," My favorite painting is

Nocturne, a depiction of nature at dusk. Nature and the outdoors are my favorite aspects of life. In nature, you can find an opportunity to do things with your hands, such as gardening, and it also provides for me a spiritual sense of calm during times of stress. In this particular piece, it is the colors that strike me. They are subtle, muted, quiet. And it elicits in me a sense of tranquility and safety, like that feeling when you close your eyes before sleep.

Another important dimension of the Snite Museum is its community outreach. Our mission is to increase not only membership but also awareness of the many opportunities for the community to discover the riches we have to offer. The Museum staff does a beautiful job of developing various activities such as the Family Night events. Over the last few years, I've been involved in ornament making during Christmas, the Fall Family Festival at Halloween and Art Beat in the summer. I've encountered many people who've remarked they were happy we were present at those events, and also that we were embracing the community."

"Another important program offered by the Friends has been the Art and Architecture Series," Angie explained. "These are organized adult bus trips to areas of interest around the Midwest, for example, Chicago to visit the Frank Lloyd Wright homes and to Grand Rapids, Michigan, for Art Prize and the Frederik Meijer Gardens and Sculpture Park. These are only a few of the many activities sponsored by the Friends of the Snite Museum, and we look forward to being able to offer more after we move into our new building."

These two abbreviated versions of Friends Forum interviews written by Juliane Morris, Friends Board Member, can be read in their entirety on our website, sniteartmuseum.nd.edu



Edward Steichen, (American, 1879-1973)
Nocturne, ca. 1905
Oil on canvas, 24 x 25 inches,
Gift of Mrs. Frank E. Hering, 1957.007.009

FRIENDS of the SNITE MUSEUM of ART

Contributions to the Friends Endowment Fund

The Snite Museum of Art and its Friends membership organization are most grateful for endowment donations made in memory of, or in honor of, special individuals. The endowment earnings support art education outreach programs.

Acknowledgments are sent to the honorees or to the family of those memorialized.

Tributes and memorials received Jan 1, 2019 through August 9, 2019

IN MEMORY OF

Thomas D. Cabot Jr.

by Frank and Fes Smurlo

Sonya Cahill

by Betty Gallagher and John Snider

Donald Turpin Cavett ND '55

by Frank and Fes Smurlo

Ted Dawes

by Betty Gallagher and John Snider

Rev. James Flanigan, C.S.C.

by Frank and Fes Smurlo

Robert Nolan Haidinger

by Frank and Fes Smurlo

Daniel Malloy

by Betty Gallagher and John Snider

Sallyann Maloni

by Betty Gallagher and John Snider

Robert Anthony Morelli

by Frank and Fes Smurlo

Mary Beth Dalton O'Reilly

by Frank and Fes Smurlo

Mary Prochaska

by Betty Gallagher and John Snider

Helen Richiski

by Frank and Fes Smurlo

N. L. (Bud) Swinson

by Snite Museum of Art Staff

Elmer "Sonny" Tepe

by Betty Gallagher and John Snider

We will miss our FRIENDS who recently passed.

Marilynn Alsdorf

art benefactor and former Snite Advisory Council member

John Bycraft member since 1987

Leo Despres member since 1988

Sondra Engel member since 1991

Rev. James Flanigan, C.S.C.

founding member and collaborator

Chuck Simon member since 2000

N.L. (Bud) Swinson

art benefactor and former Snite Advisory Council member

Kathleen Welsh member since 2012

CELEBRATING 40 YEARS



Gerardus van Spaendonck (Dutch, 1746 - 1822)
Vase of Flowers in Alcove, 1766 - 1816
 Watercolor and brown ink
 Friends of the Snite Museum of Art Fund
 1996.012

The year 2019 marks the fortieth anniversary of the Friends of the Snite Museum of Art. As the Museum's signature community support organization, the Friends have been vital contributors to the growth and appreciation of the Snite Museum's collections and exhibitions.

It would be impossible to imagine the history of the Museum without the Friends. For many years, members offered support through the purchase of works of art, acquiring more than forty objects from a variety of cultures. To celebrate this special year, the works funded by the Friends on permanent display are marked with a special label. Purchased works on paper will rotate on a temporary wall of honor on the first floor of the Museum.

Friends members also support the Museum through contributions to the Education Department and through community outreach events. In doing so, they ensure that the collections and exhibitions are brought to life for thousands of visitors from across the region. Whether an elementary school class tour, high school program, community group, or Notre Dame class, all benefit from the Friends' commitment to the Museum and its programming.

Membership to the Friends of the Snite is open to everyone and offers exclusive previews and programs, as well as reciprocal membership to art museums across the country. Visit our website sniteartmuseum.nd.edu for more information and the link for online giving. The Friends are in the process of revamping the membership levels and the online giving site for ease of use.

Happy Anniversary, Friends; the Museum and our Community thank you.



Markey Robinson (Irish, 1918-1999), *Road*, n.d., Oil on panel, Gift of the Donald and Marilyn Keough Foundation, 2017.052.003

Friends Executive Board for 2019-2020



PICTURED LEFT TO RIGHT:

Michael Szymanski - VP of Development, Kelli Kalisik - President, Cindy Dunn - VP of Administration, Juliane Morris - VP of Community Relations, Louise Anella - Treasurer, and Todd Bruce, President-Elect
 Missing from the photograph are Cheryl Ulrich - VP of Programs and Angie Chamblee - Secretary.

MUSEUM STAFF

David Acton, Ph.D.
curator of photographs

Matthew Bean, MFA
art handler

Joseph Antenucci Becherer, Ph.D.
director and curator of sculpture

Hanna Bertoldi
collections database coordinator

Gina Costa*
marketing and public relations program manager

Rachel Heisler
assistant curator of education, academic programs

Bridget O'Brien Hoyt
curator of education, academic programs

Ann M. Knoll
associate director

Sarah Martin
curator of education, public programs

Victoria C. Perdomo
registrar

Mary C. Rattenbury
coordinator, Friends of the Snite Museum

Laura K. Rieff
administrative assistant

Michael Rippey
digital and special projects program manager

Ramiro Rodriguez*
exhibition coordinator

Alexandra Schaufele
assistant curator of education, public programs

Abigail Shelton
outreach specialist, Mellon Foundation Grant

Cheryl K. Snay, Ph.D.
curator of European art

Kyle Thorne
assistant preparator

Elizabeth Zapf
senior financial analyst

*museum staff member for twenty years or more

SECURITY

Capt. Daniel Kavanaugh
security coordinator

Charles Harper
lead security monitor

Katerina Araman, Myshelle Babcoke, Elmer Bailey, Kathy Barone, Leander Brown, Rita Burks, John Chapleau, Jan Durand, Mark Ellam, Sue Fleck, Bruce Hess, Rosemary Hess, Laccine Kabel, Mark Maurer, Robbin Myers, Ray Patnaude, Frederick Slaski, Thomas Stafford, Gerald Strabley, Ralph Takach, Gary Trost, Jeff Walker, and Sarah Woolley

ACTIVE DOCENTS

Mary Allen
Don L. Arenz
Lisa Barnett de Froberville
Teresa Carroll
Mary Corbett
Linda DeCelles
Ninette Deliyannides
Angie Faccenda
Jackie Hardman
Aislin Keith
Christine Kelley
Carol Kraabel
Virginia Lehner
Sibylle Livingston
Sue Lowe
Phoebe Lykowski
Kay Marshall
Catherine A. McCormick
Mary Lou Mullen
Barbara Obenchain
Shirley Roseland
Pamela Schrader
Gail Schroeder
Rod Spear
Carole Walton
Bob Williams
Marilyn Wood

2019-20 NOTRE DAME GALLERY TEACHERS

Elyse Boldt '21
Caila Lindsey '20
Patrick McMonagle '21
Madlyn Steurer '20
Cameron Sumner '21
Isabel Weber '20

HOUSEKEEPING

Deborah Osborn

SNITE MUSEUM OF ART ADVISORY COUNCIL MEMBERS

Susan M. Driscoll, *chair*

Dr. Ann Uhry Abrams	Charlotte G. Mittler
William C. Ballard Jr.	Carly Murphy
Brigid M. Boyle	Carmen C. Murphy
Jaclyn Dooner	James S. O'Connell Sr.
Mrs. Joyce M. Hank	Roseline Olang Odhiambo
Charles S. Hayes	Beverly T. O'Grady
Richard H. Hunt	Jeannie D. O'Neill
Virginia M. Hupfer	Dr. Morna E. O'Neill
Margreta Gibbs Larson	Mary K. O'Shaughnessy
Dr. R. Stephen Lehman	Christopher Scholz
Rebecca Nanovic Lin	Frank E. Smurlo Jr.
William K. McGowan Jr.	John L. Snider
Eileen Keough Millard	Janet M. Unruh

2019-20 STUDENT PROGRAMMING COMMITTEE

Marie Latham '22, *Programming Coordinator*
Abigail Patrick '22, *Programming Coordinator*

Natalie Casal '21	Drew Lischke '20
Katherine Coogan '21	Ava Longoria '22
Caroline Cox '20	Kendall Lubkeman '23
Edyta Czaplinski '20	Rachel Mills '20
Minyi Dai '20	Angela Rogers '20
Maggie Dosch '21	Molly Schrock '23
Bridget Goodwine '23	Scott Somers '20
Sarah Harper '20	Claire Stein '22
Alexis Kelly '23	Laure Zhang '21
John Kling '21	

2019-20 STUDENT INTERNS AND ASSISTANTS

Lynne Atkins '21	Ava Longoria '22
Annie Brinkman MFA, '22	Mary Mansfield '22
Katherine Coogan '21	Sam McNally Winter 2019
Molly Doerfler '23	Rachel Mills '20
Brian Gatter '20	Abby Patrick '21
Clare Gaylord '21	Molly Queal '21
Holly Guggenbiller '20	Travonte Stewart-Marley '20
Mary Henrichs '20	Sabrina Vorne '21
Marie Latham '21	

All student workers, Gallery Teachers, and Student Programming Committee members are part of the Snite Museum Student Advisory Group which meets monthly to learn about museum projects, hear from various staff members, and provide feedback.

FRIENDS OF THE SNITE MUSEUM BOARD OF DIRECTORS

Kelli Kalisik, *president*

Louise Anella
Pam Austin
Kari Black
Todd Bruce, *president elect*
Dru Cash
Angie Chamblee
Ann Dean
Tracy Duncan
Cindy Dunn
Angela M. Faccenda, *past president*
Susan Farrington
Barbara Henry
Juliane Morris
Mary Lou Mullen
Grant Osborn
Maura Ratigan
Michael Riemke
Michael Szymanski
Cheryl Ulrich
Mary Kay Welle
Andy Wendelborn
Kathy White

former presidents:
Suzanne Cole
Celeste Ringuette
Paul W. Stevenson

ENDOWED FUNDS

Edward M. Abrams and Family Endowment for the Snite Museum
Marilynn and James W. Alsdorf Endowment for Ancient, Medieval, & Early Renaissance Art
Ashbaugh Endowment for Educational Outreach
Walter R. Beardsley Endowment for Contemporary Art
Kathleen and Richard Champlin Endowment for Traveling Exhibitions
Catherine R. and Austin I. Collins Sr. Family Endowment for Excellence for Public Art
Mr. and Mrs. Terrence J. Dillon Endowment
Susan M. and Justin E. Driscoll Endowment for Photography
Mr. and Mrs. Raymond T. Duncan Endowment for American Art
Margaretta Higgins Endowment
Humana Foundation Endowment for American Art
Fritz and Mildred Kaeser Endowment for Liturgical Art
Milly and Fritz Kaeser Endowment for Photography
Pat and Robert Kill Family Endowment for Excellence in Latin American Art
Lake Family Endowment for the Arts of the Americas, Africa and Oceania
Lake Family Endowment for Student Internships

INFORMATION

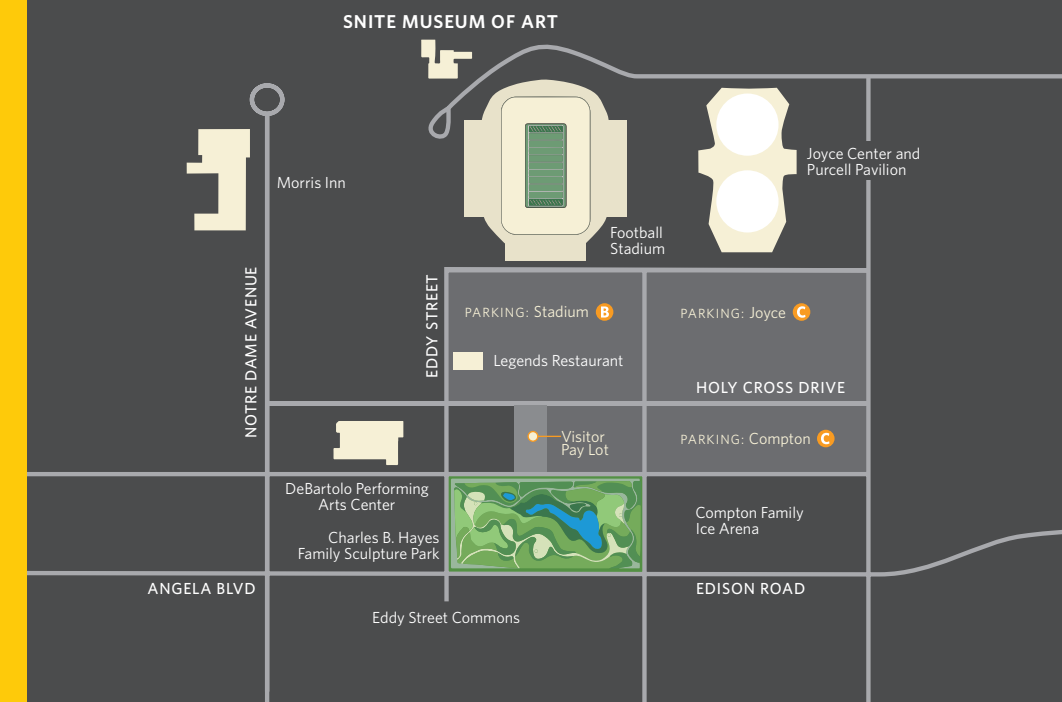
Snite Museum of Art
University of Notre Dame

(574) 631-5466
sniteartmuseum.nd.edu
facebook.com/sniteartmuseum
twitter.com/snitemuseum

GALLERIES OPEN

Tuesday – Friday 10:00 a.m. – 5:00 p.m.
Thursday open until 7:30 p.m.
Saturday 12:00 p.m. – 5:00 p.m.
Closed Sunday, Monday, and major holidays
FREE ADMISSION

LOCATION + MAP



SNITE MUSEUM OF ART

University of Notre Dame
P.O. Box 368
Notre Dame, IN 46556-0368

Return Service Requested

Non-Profit
Organization
U.S. Postage
PAID
Notre Dame, IN
Permit No. 10



Alan Mac Allister