



Calendar *of* Events

January – August 2010

The Snite Museum of Art
University of Notre Dame

ENDOWED FUNDS

Edward M. Abrams and Family Endowment for the Snite Museum
 Marilyn and James W. Alsdorf Endowment for Ancient, Medieval, and Early Renaissance Art
 Ashbaugh Endowment for Educational Outreach
 Walter R. Beardsley Endowment for Contemporary Art
 The Kathleen and Richard Champlin Endowment for Traveling Exhibitions
 Mr. and Mrs. Terrence J. Dillon Endowment
 Susan M. and Justin E. Driscoll Endowment for Photography
 Mr. and Mrs. Raymond T. Duncan Endowment for American Art
 Margaretta Higgins Endowment
 Humana Foundation Endowment for American Art
 Fritz and Mildred Kaeser Endowment for Liturgical Art
 Lake Family Endowment for the Arts of the Americas, Africa and Oceania
 Lake Family Endowment for Student Internships
 Lake Family Endowment for the Snite Museum Library
 Rev. Anthony J. Lauck, C.S.C., Sculpture Endowment
 Virginia A. Marten Endowment for Decorative Arts
 J. Moore McDonough Endowment for Art of the Americas
 Everett McNear Memorial Fund
 Bernard Norling and Mary T. Norling Endowment for 18th- and 19th-Century Sculpture
 Rev. George Ross Endowment for Art Conservation
 John C. Rudolf Endowment for the Snite Museum
 Frank and Joan Smurlo American Southwest Art Endowment for Excellence
 Snite Museum General Endowment
 John Surovek Endowment
 Anthony Tassone Memorial Art Fund
 William L. and Erma M. Travis Endowment for the Decorative Arts
 The Alice Tully Endowment for the Fine and Performing Arts

INFORMATION

Snite Museum of Art, University of Notre Dame
 (574) 631.5466
www.nd.edu/~sniteart

Galleries open:

Tuesday and Wednesday
 10:00 a.m. – 4:00 p.m.

Thursday through Saturday
 10:00 a.m. – 5:00 p.m.

Sunday
 1:00 p.m. – 5:00 p.m.

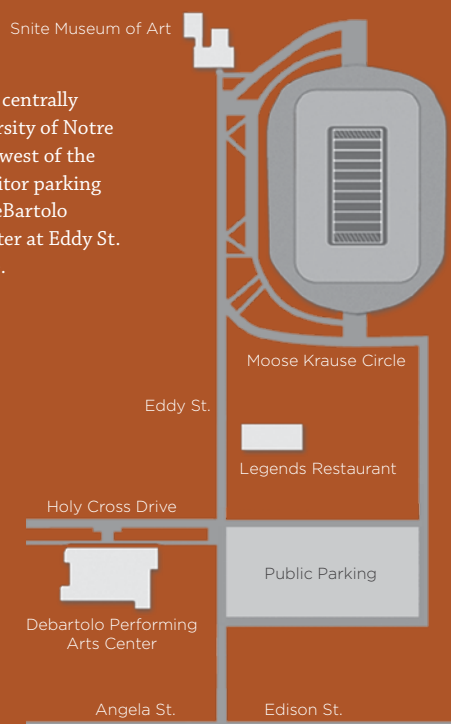
Closed Mondays and major holidays
 Free admission — open to all

Front cover image
St. Carlo Borromeo and the Plague-Stricken
 Giacinto Brandi — details on page 13

Back cover image
Marius and the Gaul, about 1796
 François-Xavier Fabre — details on opposite page

MAP

The Snite Museum is centrally located on the University of Notre Dame campus, northwest of the football stadium. Visitor parking is available east of DeBartolo Performing Arts Center at Eddy St. and Holy Cross Drive.



FROM THE DIRECTOR

Butkin Trust Gift

The Muriel S. Butkin Trust recently gifted 187 artworks previously on loan to the Snite Museum of Art. The Butkin Collection features 19th-century French paintings, drawings, prints, photographs, small sculptures and decorative arts. Many of the artworks are presently on display within the 19th-Century Gallery, such as François-Xavier Fabre’s *Marius and the Gaul*, ca. 1796, illustrated below.

Muriel was preceded in death by her husband Noah, a chemical engineer and metals executive. The Butkins lived in Shaker Heights, Ohio, and shared a passion for collecting 18th-and 19th-century art—Noah focused primarily on paintings and Muriel mostly collected drawings (which have been donated to the Cleveland Museum of Art).

In 1977, now-retired John D. Reilly Curator of Western Arts Stephen B. Spiro met the Butkins, who subsequently began to place French paintings on loan with the Snite Museum of Art. According to Director Emeritus Dean Porter, “By the time of Mr. Butkin’s death in the winter of 1980, he had placed nearly one hundred fifty French paintings and oil sketches at Notre Dame. When the Snite Museum of Art opened in 1980, we possessed a collection of remarkable consequence, nineteenth-century paintings by Gustave Courbet, Thomas Couture, Pierre Puvis de Chavannes, Jean Louis Ernst Meissonier, Jean-Léon Gérôme, Alphonse Legros, Alexandre George Henri Regnault, Charles Carolus-Duran, and François-Xavier Fabre.”



Photographic portrait of Muriel S. Butkin, ca. 1960

Courtesy of Rita Wisney

During the time that Noah was a trustee of the Cleveland Museum of Art, he developed a friendship with acclaimed 19th-century French art scholar Gabriel Weisberg, who then worked at the museum. (See page 7 for a description of the Weisberg drawing collection, which will be exhibited at the Museum in January 2010.) We are very pleased that Dr. Weisberg has committed to organize a fall 2012 exhibition and catalog of the Snite Museum of Art’s Butkin Collection.

The exhibition and publication will provide a long-overdue opportunity to acknowledge and capitalize upon the generosity and exquisite taste of these collectors who provided the Snite Museum of Art with one of its true collection strengths.

– Charles R. Loving
 Director and Curator, George Rickey Sculpture Archive

Marius and the Gaul, ca. 1796
 François-Xavier Fabre
 French, 1766-1837
 oil over ink on paper mounted to canvas
 12.5 x 15.13 inches
 Gift of the Muriel S. Butkin Trust
 2009.045.062

CONTENTS

Endowments and Museum Information	2
From the Director	3
Exhibitions	5 – 11
Recent Acquisitions	12 – 20
Education – Academic Programs	21
Education – Public Programs	22 – 23
Museum News and Events	24 – 28
Friends of the Snite Museum	29 – 35
In Memoriam	36
Contributions to the Friends Endowment	37



Image below:

Two avid collectors of Chicano and Latino art who enjoyed exchanging information during a late-September campus event—Cheech Marin, left, actor and comedian, and Gilberto Cárdenas, right, director of the Institute for Latino Studies and assistant provost (see article on page 25).



EXHIBITIONS

Markings: Koo Kyung Sook

Milly and Fritz Kaeser Mestrovic
Studio Gallery
January 17 – March 7, 2010

Korean-born artist Koo Kyung Sook created this set of six prints on handmade mulberry paper by applying photographic developing solution to fabric that was placed over sheets of photographic paper—and then lying atop the fabric. Impressions made by the weight and movement of her body were then scanned and printed by an inkjet printer.

Commenting on her process Chung Hwan Kho observed, “Although she borrows the computer to increase scale, the images cannot be placed in the category of digitally generated art. For the most part, her method falls outside existing photographic categories and might best be called *bodygraphs*. Regardless how we might choose to label the work [it] presents a new synthesis of her unique and introspective investigation of the body, identity, and existence.”



The artist will talk about her work during a 5 to 7 p.m. reception on Friday, February 19, 2010.



Marking No. 7-4, 2007
Koo Kyung Sook
Korean, born 1960
inkjet print on handmade mulberry paper
73.125 x 35.625 inches (approximately)
Acquired with funds provided by the
Walter R. Beardsley Endowment for Contemporary Art
2008.035.004



The World of Piranesi A Multi-Disciplinary Approach to Learning

Scholz Family Works on Paper Gallery
January 17 – February 28, 2010

This exhibition of the prints of Giovanni Battista Piranesi (1720-1778) involved ND students of Italian language and architecture in a series of assignments designed to expand their current and future studies in language, history, culture and design. Students in Beginning Italian for Architects translated labels; those in Intermediate Italian translated exhibition panels and wrote reflections on Piranesi's work for the exhibition website. Students in the School of Architecture's First Year Drawing class made drawings from Piranesi prints and contributed photos of them to the exhibition website. Architecture students in Rome took photos of buildings Piranesi had drawn, and they are displayed on the website next to reproductions of Piranesi's prints of the same subjects.

The Piranesi exhibition and website were made possible by a Faculty Lead Grant awarded by the Office of Undergraduate Studies and the Institute for Scholarship in the Liberal Arts. Both are cosponsored

by the Center for the Study of Languages and Cultures (CSLC), the Department of Romance Languages and Literatures, and the Snite Museum of Art.

Diana Matthias, curator of education, academic programs, the Snite Museum of Art, and Giovanna Lenzi-Sandusky, lecturer in Italian Studies, led the project. Nicole Paxton Sullo, MA candidate in art history, provided scholarly and technical support. Special thanks to Dr. Lance Askildson, director of the CSLC and to Francis Hittinger, MA candidate in Italian Studies, for developing the website which you are encouraged to visit at <http://piranesi.nd.edu>.

Arch of Titus, 1760
Giovanni Battista Piranesi
Italian, 1720-1778
etching
20.25 x 28.25 inches (51.40 x 71.80 cm)
Gift of Rica and Harvey Spivack
2006.008.003

Expanding the Boundaries: Selected Drawings from the Yvonne and Gabriel P. Weisberg Collection

O'Shaughnessy Galleries II and III
January 17 – February 28, 2010

The beautiful drawings featured in this exhibition are presented by themes such as studies for works in other media, cultural icons, traditions of rural life and landscape drawing. They range from meticulous charcoal studies to loose watercolor sketches, from layered pastels to sheets that combine multiple mediums in innovative ways.

Dr. Gabriel Weisberg is a celebrated scholar and connoisseur of 19th-century French art. Since the mid 1970s he has prepared a series of comprehensive exhibitions, catalogues, books, and articles which have focused on themes affecting French art from the middle of the nineteenth century until World War I. Many of these museum-based exhibitions and publications have played a role in redefining issues and reconceptualizing the ways in which movements and artists in this era are now viewed or discussed. The drawing collection was assembled by Weisberg and his Swiss-born wife and frequent co-author, Yvonne. Together, they essentially rediscovered several of the artists featured in the exhibition, thus expanding the boundaries of 19th-century art history.

The exhibition is organized by the Minneapolis Institute of Arts. Associate Curator of Prints and Drawings, Dr. Lisa Dickinson Michaux curated the exhibition and co-authored with Dr. Weisberg the accompanying catalogue. The exhibition and the catalogue were made possible with support from the Andrew W. Mellon Foundation Exhibitions Endowment Fund. The drawings will eventually enter the Minneapolis Institute of Arts permanent collection as part of a promised gift from the Weisbergs.



Windmill in Haarlem, 1873
Antoine Vollon
French, 1833-1900
black and white chalk on gray paper
Collection of Yvonne and Gabriel P. Weisberg
L2007.89.16

EXHIBITIONS

Yin Yu Tang: A Chinese Home

Scholz Family Works on Paper Gallery
March 14 – April 25, 2010

This exhibition, curated by Nancy Berliner, is presented in collaboration with the DeBartolo Center for the Performing Arts. It features photographs of the 200-year-old Yin Yu Tang home which was moved, piece by piece, from the Chinese village of Huang Cun to the Peabody Essex Museum in Massachusetts. The March 27 musical performance in the Center by the Kronos Quartet and soloist Wu Man features a commissioned work of music inspired by this ancient structure.

Drawing on the metaphors embodied by Yin Yu Tang of displacement and migration, the personal and private versus the public and formal—*A Chinese Home* explores China's evolving identity through works ranging from photographs and folk tunes to electronic music, enhanced with staging and video elements.

On March 25, 2010, a 6:30 p.m. panel discussion on the restoration project and the music it inspired will feature Nancy Berliner, curator of Chinese Art at Peabody Essex Museum, David Harrington of the Kronos Quartet, and soloist Wu Man. A reception will follow.

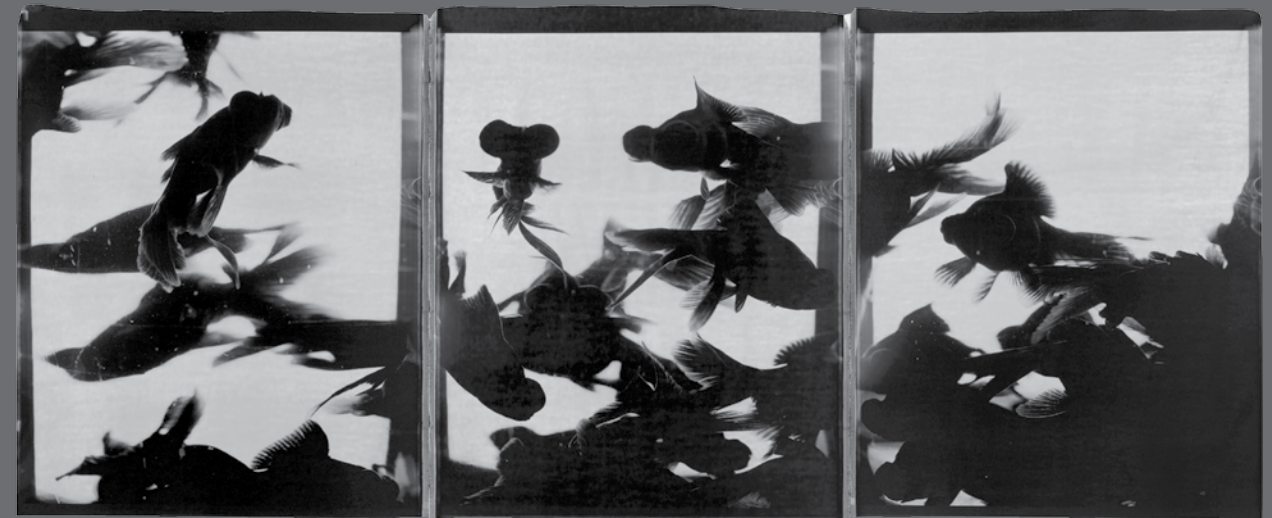
Top image: Just a few of the eight generations of Huang Family members who lived in the house.

Center image: The late-18th-century home (center) was built by a wealthy merchant in the small village of Huang Cun, in southern Anhui Province.

Bottom image: The home as it was being disassembled.



Photographs courtesy of the Peabody Essex Museum



Caroline Chiu Polaroids as Chinese Ink Painting

An installation from a Chinese Wunderkammer
Milly and Fritz Kaeser Mestrovic Studio Gallery
March 14 – April 25, 2010



These photographs are taken from Hong Kong artist Caroline Chiu's larger series entitled *Dreaming: A Chinese Wunderkammer*. Wunderkammer were 17th- and 18th-century European "wonder rooms" or "cabinets of curiosity"—some of the earliest known "museums"—which contained specimens reflecting the natural world, anthropology, archaeology, relics, and art. The late Qing emperor Qianlong, known for his passion for the arts, also pursued this type of collecting.

In Chiu's case, she collects, by photography, objects representing the material culture of traditional China: bonsai, scholar's rocks, flowers, artworks depicting the animal zodiac, and, here, goldfish. Her choice of subjects makes reference to historical Chinese culture; her graphic photographic images of goldfish suggest the brushstrokes of traditional Chinese ink painting and the sweeping abstract shapes of Chinese writing.

Because the images were taken with a rare 20 x 24 inch Polaroid camera—for which film is no longer manufactured nor available—the exhibition is also an elegy to the era of Polaroid cameras and film. Indeed, it may mark the passing of film media in favor of digital photography.

Describing her planned installation, Chiu indicates:

Individual photographs will be installed in series from three to ten images so that the swimming of the goldfish appears continuous and fluid. The photographs will be accompanied by an aquarium replicating the dimensions of the gallery and replete with live goldfish. The change in scale between the actual aquarium and the depiction of the gallery as an enormous aquarium will be enhanced by sounds of splashing water—so the viewer might imagine themselves swimming among the goldfish. That is, I hope to create dissonances of scale by creating conflicting perceptions of looking into the actual aquarium while simultaneously feeling contained within a larger aquarium.

Concurrent to this Snite Museum of Art exhibition, Chiu will also create a five-day installation on the Notre Dame campus entitled *108 Thoughts on Spirituality*. The installation will consist of projected images of flames, photographs of flames, music from various sacred traditions, sacred smells, a space to meditate and an opportunity for audience members to respond to questions about spirituality by writing or drawing upon Chiu's photographs. Participants will receive one of Chiu's photographs in appreciation for their commentary on spirituality.

The artist will speak during a 5 to 6 p.m. reception on Thursday, April 15, 2010.

EXHIBITIONS

2010 BFA/MFA Candidates' Theses Exhibition

O'Shaughnessy Galleries
March 28 – May 16, 2010

This annual exhibition of culminating works by seniors and third-year graduate students in the Art, Art History and Design Department demonstrates a broad awareness of the themes and processes of contemporary art and is often provocative.

Museum visitors—particularly trustees, parents, and other such guests—are often challenged and always intrigued by the aspiring graduates' creations. The artworks range from industrial and graphic design projects and complex multi-media installations to more traditional art forms such as paintings, drawings, photographs, prints, ceramics, and sculpture.

On Sunday, March 28 the Art, Art History and Design Departmental awards will be announced in the Annenberg Auditorium during the 2–4 p.m. opening reception, along with the 2010 Efroymsen Family Fund Emerging Artists Awards.

For the fourth consecutive year, these are possible due to a \$10,000 grant award from the Efroymsen Family Fund, a Central Indiana Community Foundation Fund.



2009 Mixed-media print by Brooke Vertin



Haute Couture-Blackface, 2009, color photograph by Christopher Andrews



2009 Ceramic sculpture by Ryan Bantz

A Selection of Recent Photo Acquisitions

Scholz Family Works on Paper Gallery
May 9 – June 20, 2010

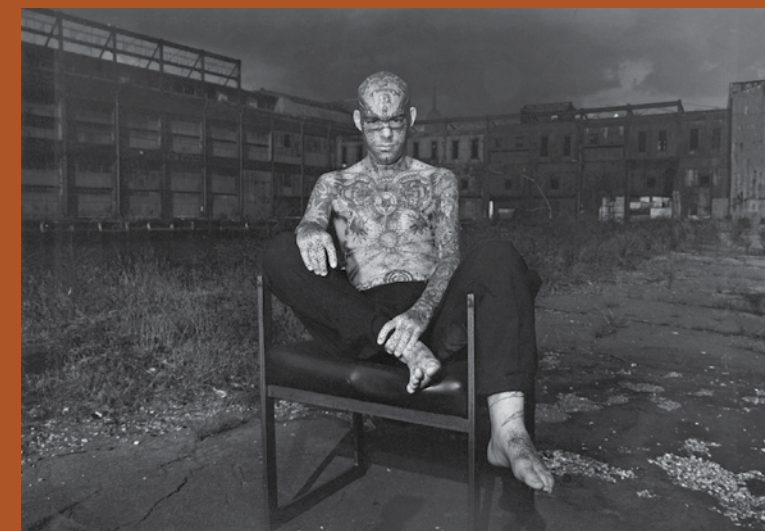
This small selection of recent additions to the photography collection will include work by Mexican photographer and recent guest professor Antonio Turok, Brazilian-American artist Vik Muniz, photographs of tattooed people by Jeff Crisman, and others.

"Tattoo" Mike Wilson, New York City, 1991

Jeff T. Crisman
American, born 1952

chromogenic print
16 x 20 inches (50.8 x 40.6 cm.)

Acquired with funds provided by the Walter R. Beardsley
Endowment for Contemporary Art
2009.004.008



Re-installation of Mesoamerican Gallery



The summer 2010 re-installation of the Mesoamerican Gallery celebrating the 2010 bicentennial of Mexican independence from Spain (September 16) and the centennial of the Mexican

Revolution (November 20) will be cosponsored by the Consul General of Mexico in Chicago, Ambassador Manuel Rodríguez Arriaga. *Body and Soul: Life, Death and Wellness in Ancient Mexico* will open in early fall and feature human figurines sculpted in Mexico from Olmec to Aztec times, 1600 B.C.E.–1521 C.E. Figurine poses that illustrate robust health, a wide variety of medical conditions, the faded or now-invisible body paint that depicts the Mexican concept of the soul, and the significance of costumes worn by victims of human sacrifice will be featured. The re-installation will add some fifty pieces not now on view as well as greatly expand a section that currently deals with some of these topics.

Douglas E. Bradley, curator, Arts of the Americas, Africa and Oceania, draws upon his thirty years' experience in collecting the figurines to interpret their functions and symbolism via photographic ultraviolet (UV) light research to make visible, again, the faded body painting.



In July 2009, Douglas E. Bradley guided Amb. Manuel Rodríguez Arriaga, consul general of Mexico in Chicago, through the Mesoamerican Gallery, in which *Body and Soul* will be installed during the summer of 2010.



Two Italian Baroque Paintings Donated by Joseph F. McCrindle

The Snite Museum is one of about 30 American museums to benefit from the generosity of publisher, philanthropist and art collector, Joseph F. McCrindle, whose massive collection of old master paintings, and old master and 19th-century drawings, was dispersed after his death in July 2008 at the age of 85. McCrindle (BA Harvard '44, JD Yale '48) worked in the financial and publishing worlds before becoming a literary agent. He was the founder and editor of the quarterly *Transatlantic Review* and creator of the Henfield Foundation, now called the Joseph F. McCrindle Foundation, to award grants to organizations and individuals involved in the arts and social justice.

McCrindle donated two of his Italian Baroque (1600–1750) paintings to the Snite. *St. Carlo Borromeo Administering the Sacrament of Holy Eucharist to the Plague-Stricken* is attributed to Giacinto Brandi (Italian, 1621-1691) and appears to be a preparatory oil study for a large painting by Brandi that hangs over a chapel altar in Santa Maria della Vittoria, Rome, Italy. McCrindle purchased it from a Roman art dealer in 1966. Brandi had numerous commissions to decorate Italian churches, and his contemporaries considered him as skillful as his peers Pier Francesco Mola, Ciro Ferri and Carol Maratti.

The painting commemorates Cardinal St. Carlo Borromeo's (Italian, 1538–1584) devotion to the care of bubonic plague sufferers in Milan during the 1576 epidemic, which was just one of a lifetime of remarkable events. He made major contributions to the reforms within the Church through participation in the Council of Trent and the creation of the Tridentine Catechism, and his establishment of an educational system for training seminarians.

The allegorical female figure seated on a cloud by Francesco de Mura (Italian, 1696–1782) is also likely to be a study for a larger work, but requires further research. He had many secular and religious architectural commissions to decorate large ceilings with complex allegorical scenes. The bright, pastel, color palette indicates the influence of then-newly-popular Rococo style from France, and thus a late work by de Mura.

The paintings add to the Museum's collection of old master paintings, including the large Francesco de Mura already in the collection—*Bacchus and Ceres*, 1735, on view in the permanent collection galleries.



Above right:

St. Carlo Borromeo Administering the Sacrament of Holy Eucharist to the Plague-Stricken, ca. 1668-69
Giacinto Brandi
Italian, 1621-1691
oil on canvas
19.375 x 18.125 inches
Bequest of Joseph F. McCrindle Collection
2009.031.001

Seated Allegorical Figure Surrounded by Putti, late 18th-century
Francesco de Mura
Italian, 1696-1782
oil on canvas
22.063 x 17.375 inches
Bequest of Joseph F. McCrindle Collection
2009.031.002

RECENT ACQUISITIONS

William McGraw Photography Collection Gift

Thanks to a generous gift by Dr. William McGraw '65 of Indianapolis, the photography collection has been made stronger. Dr. McGraw has donated his entire collection of contemporary photography to the Museum. The 49 pieces represent some of the most important artists of the recent period, including Sally Mann, Shelby Lee Adams, Robert and Shana ParkeHarrison, Richard Misrach, Terry Evans, Abelardo Morrell, and Michael Kenna. Many of the artists are new to the collection, such as Keith Carter, James Fee, and Rocky Schenck. A few images are by photographers already in the collection, but there is no duplication; styles range from straight documentation to surrealism. A welcome addition is a large early photograph by Notre Dame art professor Martina Lopez.

The Museum is planning a future exhibit of the entire collection.



Brothers Praying, 1993 (opposite page, above)
Shelby Lee Adams
American, born 1950
gelatin silver print
18 x 14.75 inches (45.7 x 37.5 cm.)
Gift of Dr. William McGraw '65
2009.047.028

New Mothers, 1989 (opposite page, below)
Sally Mann
American, born 1951
gelatin silver print
8 x 10 inches (20.3 x 25.4 cm.)
Gift of Dr. William McGraw '65
2009.047.008

Reclamation, 2003
Robert and Shana ParkeHarrison
Americans, Robert born 1968, Shana born 1964
photogravure
18 x 21 inches (47.5 x 53.3 cm.)
Gift of Dr. William McGraw '65
2009.047.041

RECENT ACQUISITIONS

Nineteenth-Century Latin American Photographs

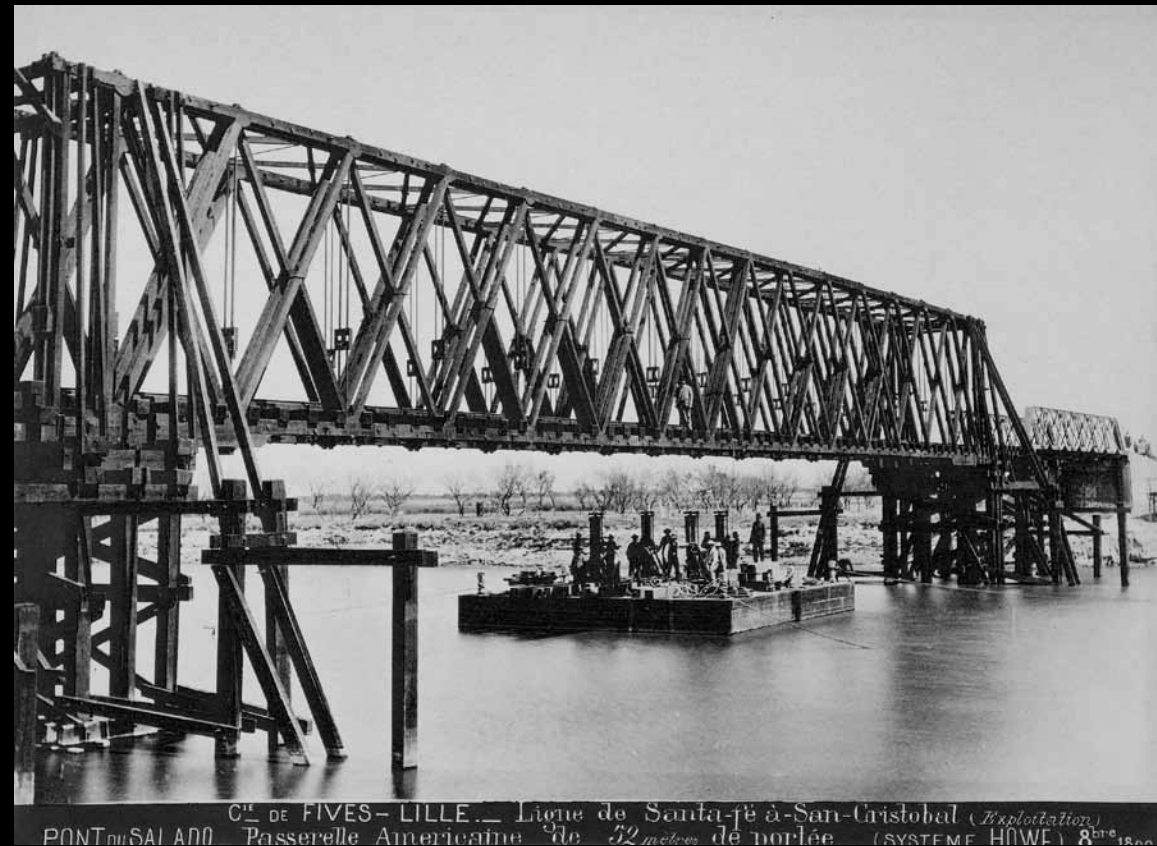
The Snite Museum continues to build its already-substantial holdings of nineteenth-century Latin American photographs with recently acquired images from Chile, Argentina, and Venezuela. The latter are very rare and were taken on an expedition up the Orinoco River into the Amazon jungle by French anthropologist and explorer Jean Chaffanjon. The indigenous peoples seem not to share the explorers' enthusiasm for the camera, but author Jules Verne used the report of the expedition as the basis of a novel.

Along the Orinoco River, Venezuelan Amazon, ca. 1886-87
 Jean Chaffanjon
 French, 1854-1913
 albumen silver print
 9.25 x 6.75 inches
 Acquired with funds provided by the 2008-09 Art Purchase Fund
 2009.055.002

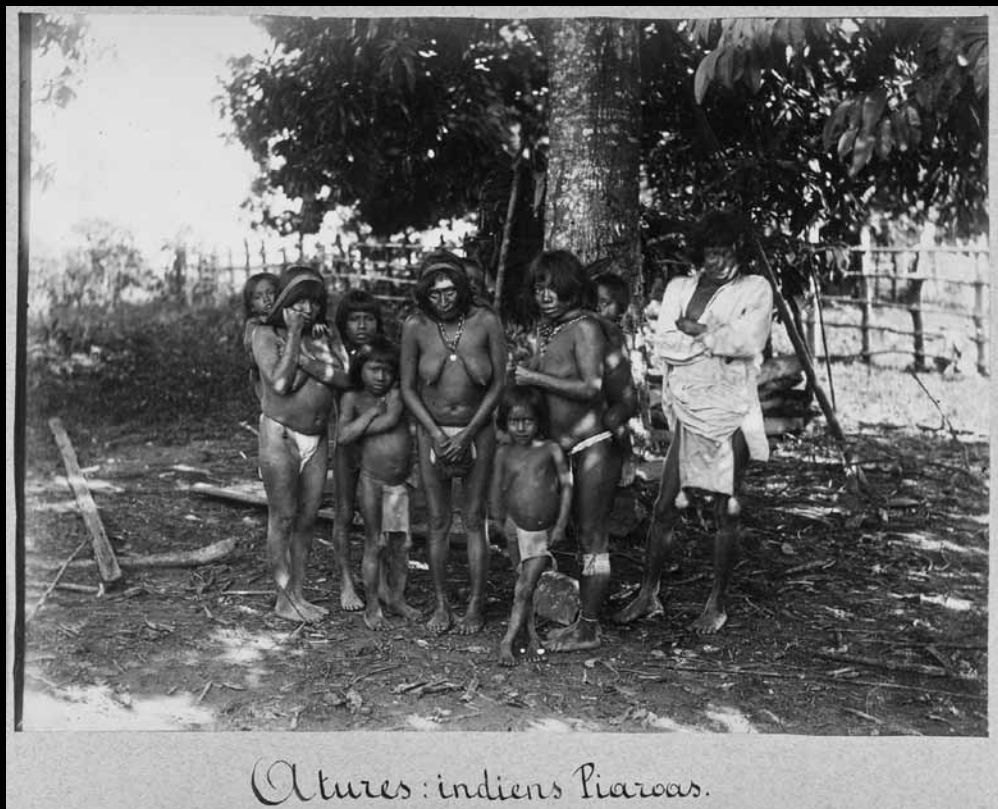
Guahibo Indians, Venezuelan Amazon, ca. 1886-87
 Jean Chaffanjon
 French, 1854-1913
 albumen silver print
 6.75 x 9.25 inches
 Acquired with funds provided by the 2008-09 Art Purchase Fund
 2009.055.003



Sur l'Orinoque



Construction of the Empalme Railroad Bridge over the Salado River, Argentina, ca. 1890-1894
 George Poulet
 French, 1848-1936
 cyanotype
 8.25 x 11 inches (21.0 x 27.9 cm.)
 Acquired with funds provided by the 2008-09 Art Purchase Fund
 2009.055.001



Atures : indiens Piaroas.

Memorial Gift

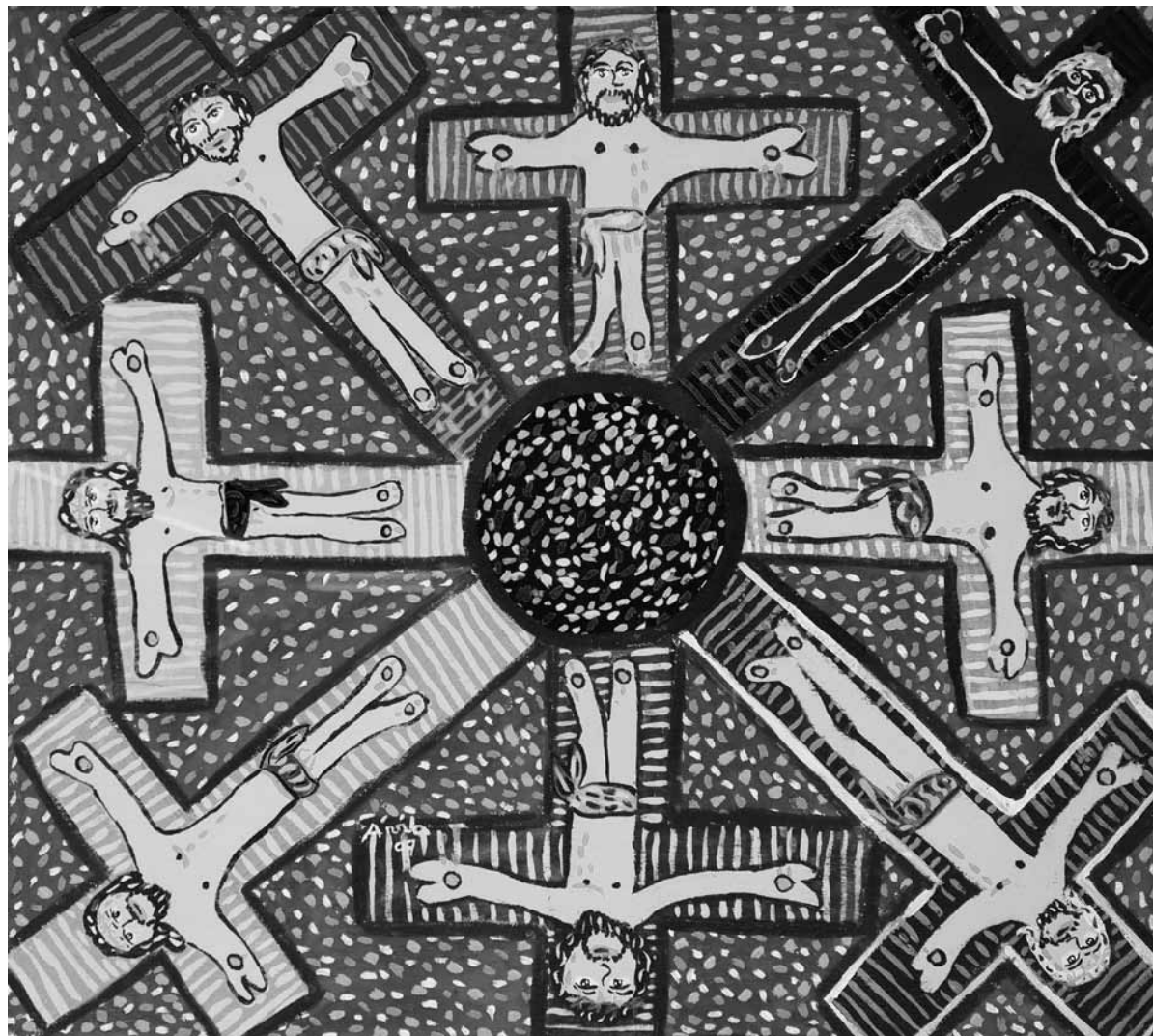
Vik Muniz Photo Given in Memory of Michael O'Shaughnessy '63

Gilberto Cárdenas, director of the Institute for Latino Studies, has made a gift in memory of Michael O'Shaughnessy; the photographer, benefactor, and friend of the Museum died in May 2009. The contemporary photograph *Under the Bed* by the Brazilian-American artist Vik Muniz is an ambrotype—a photograph on glass, popular in the mid-nineteenth century—accompanied by an excerpt from a Goethe poem.

It depicts a boy under a bed playing with an object; the poem reflects on how the significance of things changes as we grow older. Both text and photograph are housed in a folding dark walnut box—a reference to the old cased photographs of the nineteenth century.



Under the Bed, 2005
 Vik Muniz
 American, born in Brazil, 1961
 ambrotype with letterpress in black walnut case
 4.75 x 11.625 inches (12.1 x 30.2 cm.)
 Gift of Dr. Gilberto Cárdenas in memory of Michael O'Shaughnessy
 2009.052



Naive Painting by Ricardo Ávila

Cuban-American poet, critic, curator, teacher and collector Ricardo Pau-Llosa gave the Museum this painting by Costa Rican artist Ávila. In addition to his very successful career as a poet and teacher, Pau-Llosa has also generated an original model of art criticism which maintains that Latin American modernist painting and sculpture is distinct from parallel currents in Europe and the United States because of the high presence of metaphor, metonymy and synecdoche in its images. He was a senior editor of *Art International* from 1982 to 1994, North American editor for *Southward Art*, and a contributor and advisor to the encyclopedic *Dictionary of Art*, 1996. A frequent lecturer at major art museums such as the Art Institute of Chicago, his art criticism has appeared

frequently in visual art periodicals and journals, and he has served as a juror and curator in various international biennials and group exhibitions.

Pau-Llosa is assisting the Snite Museum of Art in developing its collection of Modern and contemporary Latin American art.

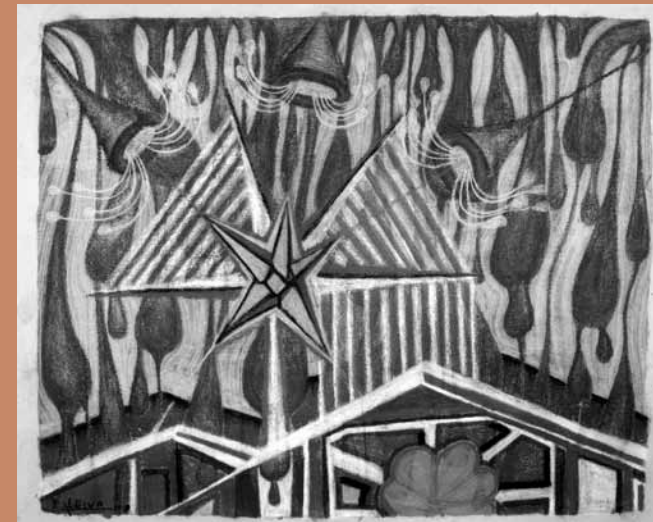
Untitled (naive painting featuring eight crucifixions), 2007
 Ricardo Ávila
 Costa Rican
 acrylic on canvas
 25 x 28 inches
 Gift of Ricardo Pau-Llosa
 2009.051.002

Emboscada by Nicolás Leiva

Recent gifts of art to the Snite Museum by poet, art critic and collector Ricardo Pau-Llosa inspired contemporary Latin American artist Nicolás Leiva to donate three pastels from his 2008 series, *Emboscada* (Ambush).

Leiva's move from his native Argentina to Miami, Florida, in the early 1990s coincided with both the rise of the American art world's interest in contemporary Latin American art and the emergence of the Miami art scene. The artist's primary goal is to create a pleasurable experience for the viewer, no matter what the media: he has painted cars, surfboards and jeans as well as canvases. In the late 1990s he traveled to Faenza, Italy, where he became intrigued with ceramics. Since then he concentrates on that medium, dividing his time between Italy and the United States.

No matter what the medium, his vibrant palette and imagery remain consistent, and his imaginary flora and fauna continue to inhabit a world filled with mystical symbolism.



Emboscada #1, 2008
 Nicolás Leiva
 Argentine, born 1958
 pastel on canvas
 33 x 26 inches
 Gift of the artist
 2009.050.001

Emboscada #2, 2008
 Nicolás Leiva
 Argentine, born 1958
 pastel on canvas
 33 x 26 inches
 Gift of the artist
 2009.050.002

Emboscada #8, 2008
 Nicolás Leiva
 Argentine, born 1958
 pastel on canvas
 32 x 26.5 inches
 Gift of the artist
 2009.050.003



Addition to the Works on Paper Collection
Gerhard Richter: Elizabeth I

This image is quintessential Capitalist Realism, the German version of Pop Art developed by Gerhard Richter and Sigmar Polke in the 1960s. Similar to Andy Warhol, Richter saw the photographic images propagated in mass communication and advertising as part of our culture's new visual landscape. Noted art critic and philosopher Arthur C. Danto succinctly observed, "With Richter...it is as if photographs are his reality." In this particular instance, Richter based his image on a newspaper reproduction of Queen Elizabeth — an individual whose visage had become a cultural icon, just like representations of Chairman Mao and Marilyn Monroe. At the time the print was

executed, Queen Elizabeth represented for Richter a moderating voice in contrast to extreme leftwing opinions then being expressed in Germany.

This print is also in the collections of the Museum of Modern Art, New York City; Museum of Fine Arts, Boston; and the Tate Gallery, London. There is an oil painting by Richter of the same subject, *Queen Elizabeth*, 1967, in the collection of the Musée d'Art Moderne de la Ville de Paris.

Elizabeth I, 1966
Gerhard Richter
German, born 1932
lithograph, 13/50
27.563 x 23.375 inches (70 x 59.4 cm)
Acquired with funds made available from the Walter R. Beardsley Endowment for Contemporary Art
2009.046



What's in a Portrait? People, Places and Things
An eight-session class for the Forever Learning Institute, South Bend

In this fall 2009 class, participants were asked to consider broadening the commonly-held idea that a "portrait" is a likeness only of a human being. But to what extent is a painting of a real place a portrait? Can imagined things, people and places be considered

to be portraits? Although it is difficult to provide definitive answers, merely asking the question helps us to see more and to better understand the human practice of image-making.



Spanish-language Student Docents

Gioconda Carrera Herrera, Mariana Alvarado Pena, and Fatima Monterrubio have provided countless guided museum exhibition tours in Spanish for hundreds of their fellow ND students. Their language

skills, good humor, and adaptability create an enjoyable learning experience for students at all levels of Spanish classes. The museum education staff appreciates their individual contributions and wishes the three May 2010 degree candidates success in their future endeavors.



Ninth Annual Day of the Dead Celebration and Installation

Los Angeles artist Maria Elena Castro created the November 2009 *Día de los Muertos* (Day of the Dead) *Ofrenda* installation. The memorial altar (*ofrenda*) honored the artist's deceased father, a craftsman who had designed carnival floats paraded during *Semana Santa* (Holy Week) in Mexico. Castro combined symbols of her father's personal attributes with the traditional *ofrenda* offerings of food, drink, candles, and marigolds. Construction in homes of *ofrendas* and decoration of graves during an all-night vigil by family members are aspects of this annual Mexican event that combines ancient tradition with the eve of the Church's observance of All Saints' and All Souls' Days.

The opening reception included a brief talk by Castro, along with entertainment by ND student musicians and members of the Ballet Folklórico Azul Y Oro. It ended at a campus restaurant with refreshments, free T-shirts and dancing to Latin music provided by DJ Jaime Del Rio.

The annual exhibition and celebration are cosponsored by the Institute for Latino Studies and the Snite Museum of Art, with support from the Kellogg Institute for International Studies, Campus Ministry, and Multicultural Student Programs and Services.

Top image: Artist Maria Elena Castro with her *Día de los Muertos* (Day of the Dead) gallery installation.

Below: ND students entertained attendees with Mexican songs during the October 29 celebration.



Student Guide to the Renaissance and Medieval Galleries

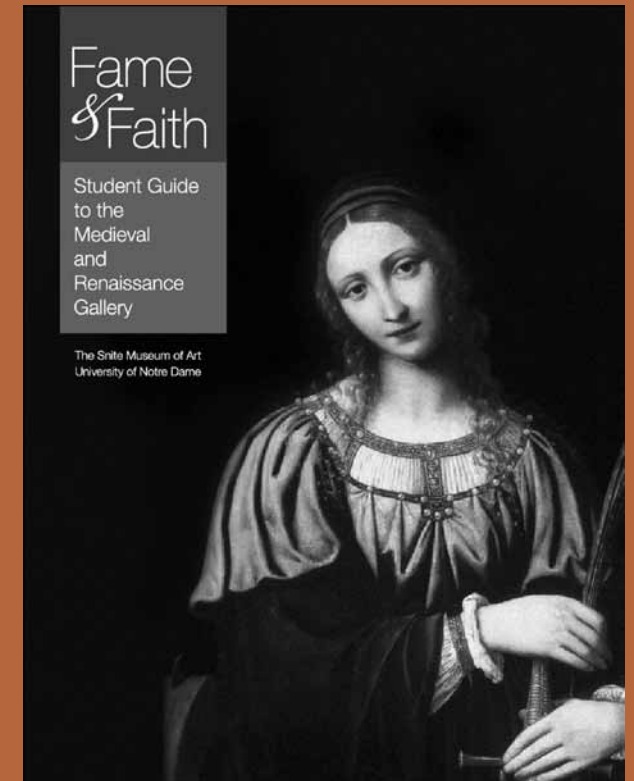
A *Student Guide to the Renaissance and Medieval Galleries* at the Snite Museum of Art has been developed and is ready for area teachers and their students. The guide was designed to engage students in careful observation of the museum's objects. Docents familiar with the galleries lead small groups of students as they travel from object to object, observing, discussing, and writing.

Some of the activities included are "How to Recognize a Saint," and "The Materials of the Renaissance Painter." Extended activities such as designing a personal crest or creating a self-portrait are meant to be completed in the student's classroom following the museum visit.

The student guide was authored by museum intern Erica Hansen, MA '09, Jim and Joan Bock Intern, and designed by graphic design interns Amber Cordova, MFA candidate and Michael Swoboda, MA '08. Production costs of this guide were generously underwritten by the Ashbaugh Endowment for Educational Outreach.

Field-tested by 60 sixth-grade students from Christ the King School in South Bend, and 25 students from Twin Branch Model School in Mishawaka, the guide meets Indiana and national standards. To schedule a 90-minute visit, teachers should call the tour desk at 631-3093. Limited financial assistance for bus transportation is available.

Local art teachers, Jenny Kupfer, Christ the King School, and Candace Reilly, Trinity School at Greenlawn, South Bend, were advisers, and Curator of Education, Public Programs, Jackie Welsh directed the project.



New Docent Training Scheduled for Fall 2010

The Snite Museum welcomes applications from individuals with a desire to join the museum's corps of volunteer gallery guides. Training involves attending a weekly, all-day class, for eight months. Volunteers participate in classes in basic art history, touring strategies, lectures and gallery talks by museum curators, independent research and practice in leading

tours. A commitment of two years post-training is required. Many of the museum's docents are retired teachers, but a degree in education is not a prerequisite. Interest in art, learning, and skills in public speaking are necessary. Docents lead tours at both the Snite Museum and the South Bend Museum of Art. For an application, call Jackie Welsh at 631-4435.



In Praise of Donors reception

Dr. and Mrs. R. Stephen Lehman (Maureen), donors for whom the exhibition *In Praise of Donors* was designed, invite fellow council members into the gallery during the opening reception.



Advisory Council meeting

Advisory Council members Joan and Jim Bock converse with Bock Graduate Intern Erica Hansen, MA '09, during a break in council meetings.



Cheech Marin museum tour and talk in the DeBartolo Center for the Performing Arts

Actor Cheech Marin, of earlier comedy fame—now famed for his Chicano art collection—tours the Museum while on campus at the invitation of Multicultural Student Programs and Services to talk about his collection and receive an Institute for Latino Studies honorary award. Marin is planning a second traveling exhibition curated from his collection and the Snite is a possible venue.



Paul Chaat Smith talk during September opening reception and campus visit

Smithsonian lecturer on Native American art Paul Chaat Smith speaks at the *Fritz Scholder, Contemporary Artist: Influences* opening in September.



Dialogue and Events During Photography Exhibition

A fall exhibition focused on the topic of extreme eating disorders, *THIN: Photographs by Lauren Greenfield*, led to much discussion on campus. It documented the treatment of female residents of an eating disorders clinic in Florida and was accompanied by excerpts from the diaries kept by some of them. Reactions both pro and con appeared in letters and articles in the daily campus paper, *The Observer*, and the monthly *Scholastic Magazine*. Some considered the exhibit exploitative; others felt that documentary photographs are not really art and do not merit exhibition in the Museum.

However, the overwhelming response was positive. Valerie Staples, a therapist specializing in eating disorders, participated in a public program sponsored by the museum and reported an increase in the

number of students coming to the Center for information or assistance for themselves, their roommates, or their friends, since it had gone on display.

The annual student-run event, Body Awareness Week, incorporated the exhibit by scheduling gallery tours and a screening in the Annenberg Auditorium of the film version of *THIN*, an award-winning HBO documentary. A number of faculty used the exhibit as part of their curriculum, and numerous groups requested tours, among them the residents of a women's dormitory and the dietary staff of Memorial Hospital.

The Snite Museum is pleased to have presented an exhibit from which so many have benefited.



New Catalog Published

The Museum published a catalog to accompany the November 2009 exhibit *Darkness and Light: Death and Beauty in Photography*. All 130 photographs are reproduced with essays by the Milly and Fritz Kaeser Curator of Photography, Steve Moriarty and by the Rev. John A. O'Brien Chair in Theology, Prof. Larry Cunningham. Robert Sedlack, associate professor of art, designed it.



The Snite Museum of Art is now on Facebook

Search "Snite Museum of Art" and become "a fan" in order to receive updates on exhibits, gallery talks, and events. Our page will have photos of past exhibits and events, as well as gallery photos to be shared with family and friends. Fan us now on Facebook and join the growing art community at ND.



Publications Now Available on Snite Web Site

Visit the new "publications" section of the museum's website (www.ne.edu/~sniteart) site to view and print recent exhibition catalogs, highlights of the permanent collection and the latest issue of *Events*. This new "electronic library" was developed in response to the campus-wide mandate to "go green", while providing economical accessibility.

Summer 2010 Renovations

Next summer the galleries and the lower-level rest rooms will have limited availability due to three major renovation projects scheduled to start mid-May and continue into August. The passenger elevator car will be replaced and hydraulic lift-system updated; the Scholz Family Works on Paper Gallery will be expanded; and a "family rest room" that meets current American Disabilities Act (ADA) requirements will be created, with access via the Arts of Africa Gallery.





Art Storage Cabinets Acquired

Generous 2009 donations of African art collections necessitated the purchase of twelve more state-of-the-art storage cabinets. Seven flat files, and five lockable cabinets, each with shelves and drawers of various heights, accommodate many objects in a dust-free environment. Their efficient design and use of space solve current storage challenges, and will minimize future ones.

Douglas Bradley, curator of the arts of the Americas, Africa, and Oceania, moves recent African art donations into new storage cabinets.



2009 Art & Architecture Tour Series

Studio Arts on Grape Road inspired the would-be artists in our group eager to learn more about oil and pastel painting, calligraphy, book art, and papermaking, while the less talented among us could only admire and covet their skills.

A visit to the summer studio of professional artist Diane Tesler in Kewanna was so much more than a beautiful day in the country. The acclaimed instructor from the D.C. area winsomely conveyed her fondness for the region's farms and structures.

Top image: Presentation by artist Anne Binder at Studio Arts, Mishawaka, Indiana.

Below: Diane Tesler and one of her paintings.



New Board Members

President Molly Trafas announced that Amy Tyler, Mindy McIntire Todd, and Anna Jean Cushwa are members of the board of directors, following balloting at the annual meeting in May 2009.

Notice of May 2010 Annual Meeting and Election of Officers

The annual election of members to the Friends board of directors will take place at 1pm on May 17 in the Morris Inn. All members of the Friends of the Snite Museum of Art are eligible to make nominations, using the form available from the Friends office, and results will be announced following the meeting. Reservations are required; please call 631-5516 to do so.

FRIENDS OF THE SNITE MUSEUM ANNUAL CHRISTMAS BENEFIT DINNER



2009 Christmas Benefit Committee

(Left image): Richard and Molly Trafas, Robert and Susan Shields, Charles and Annick Loving, Honoree Charles Hayes and Vicki McIntire, and the four co-chairs Najeeb and Nancy Khan, Thomas and Charlotte Mittler

(Right image): Richard and Joyce Stifel, Honoree Charles Hayes and Vicki McIntire, Dennis and Birgitta Hulth.

(Not pictured): Richard and Jean Dennen, Ronald and Jane Emanoil, Joyce and Roger Foley, John and Barbara Phair, Shawn and Mindy Todd

2009 Christmas Benefit Underwriters

CHRISTMAS BENEFIT DINNER FOUNDERS

Patricia and Arthur J. Decio

PREMIER

NIBCO, Inc.

CONTRIBUTOR

In Memory of Jean and Russell G. "Pete" Ashbaugh
Burkhart Advertising, Inc.
1st Source Bank
IOI Payroll Services, Inc.

TABLE SPONSOR

Barnes & Thornburg LLC
Gurley Leep Automotive Family
Holladay Properties
Charlotte and Tom Mittler
National City Bank
St. Andrew's Plaza

DONOR

Julie and William C. Ballard, Jr.
Mr. and Mrs. Terrence J. Dillon
Endowment
KeyBank
Alice Tully Endowment for the Fine and Performing Arts
Amy and Matthew Tyler

PATRON

Richard E.A. Atkinson
Kathy Beeler
Jeannelle and Brian Brady
Kathy and Wally Brant
St. Julien and Kevin Butler
CB Richard Ellis/Bradley
Centier Bank
Suzanne and Cecil Cole
Corson Family Foundation, Inc.
Susan Ohmer and Donald Crafton
Anna Jean and William Cushwa



Lucy and Thomas P. Danis
Ann and Fred Dean
Bettie Dippo
Dixie and Richard Dougherty
Robert P. Doyle
Susan and Justin Driscoll
Jane and Ron Emanoil
Joyce and Roger Foley
Dorothy G. Griffin
Hacienda Mexican Restaurants
Kelly Kathleen Hamman
Richard D. Heman, Jr.
Birgitta and Dennis Hulth
Marlene and Douglas Hunt
Indiana Oxygen
Ginger and Brian Lake
Mary Gerry and Tom Lee
Deirdre and Tim McTigue

Merrill Lynch-William Bissell
Eileen Keough Millard
Al Nathe
Notre Dame Federal Credit Union
Beverly T. and Robert E. O'Grady
Anne and Gene Pendl
Real Estate Management Corporation
Brian Regan
John D. Reilly
Celeste and Adrien Ringuette
Susan and Jon Ritten
Mary and Peter Ritten
Betty Gallagher and John Snider
Joyce and Tom Sopko
Joyce and Dick Stifel
Teri and Raymond Stout
Molly and Richard Trafas
Kerry and Michael Wallace



2009 Benefit Honoree Charles S. Hayes

The Friends twenty-eighth Christmas Benefit Dinner was held December 3 at DeBartolo Center for the Performing Arts. The 2009 honoree, Charles S. Hayes, '65, is a long time contributor and donor to the Snite Museum, with the most recent gift being his collection of over 560 20th-century Mexican graphics.

Forty-three prints were exhibited in O'Shaughnessy Galleries this past year. Entitled *Para la Gente* (For the People), this exhibit was accompanied by an 84-page illustrated catalog. These prints now serve as a valuable academic tool for students of art and art history, as well as other University disciplines.

In addition to mid-century urban and social realism paintings, Hayes collects Arts and Craft silver and vintage sports cars. A resident of South Bend for thirty years, Hayes's daughter Anne and son Chas are both Notre Dame graduates.

The Friends of the Snite thank "Charlie" Hayes and the Benefit Committee for making this a most successful, enjoyable evening.



The decorating committee's successful combination of unique floral pieces and dramatic lighting transformed the Regis Philbin Studio Theatre into a magical site, setting the holiday mood for the post-dinner ND Glee Club performance.

FRIENDS OF THE SNITE MUSEUM IN 2009

PREMIER

Patricia and Arthur J. Decio

DIRECTOR'S CIRCLE

Pete and Jeannie Ashbaugh
Mr. and Mrs. Christopher Murphy

DONOR

Ms. Janette Burkhart-Miller
Mr. George Cannon, Jr.
Mr. and Mrs. Thomas H. Corson
Ms. Bettie Dippo
Mr. and Mrs. Richard J. Dougherty
Mrs. Bernard J. Hank, Jr.
Mr. and Mrs. Charles W. Hillman
Mr. Troy Holland
Mr. and Mrs. Douglas Hunt
Pat and Bob Kill
Mr. and Mrs. Thomas J. Lee
Mr. Michael McLoughlin
Mr. and Mrs. Thomas Mittler
Mr. and Mrs. Martin Naughton
Mr. and Mrs. John Phair
Mrs. Robert T. Rolfs
Mr. Brad Toothaker
William P. Tunell, MD
Courtney and Mark Watson, Jr.

BENEFACTOR

Carol and James Walton

PATRON

Mr. and Mrs. Roger N. Aiello
Mr. and Mrs. William W. Bissell
Mr. and Mrs. Brian Brady
Mr. and Mrs. Robert J. Deputy
Mr. and Mrs. David A. Eckrich
Mr. and Mrs. Ronald V. Emanoil
Mr. and Mrs. Charles W. Hillman
Ms. Marilyn Kalamaros
Dr. and Mrs. J. Michael Kelbel
Mr. and Mrs. David Mennel
Irwin and Andra Press
Mr. and Mrs. Adrien Ringuette
John D. Reilly
Mrs. Dot Wiekamp

SUPPORTING

Mr. Richard Atkinson
Mr. William W. Bissell
Dr. and Mrs. James Christensen
Mr. Donald Crafton and Ms. Susan Ohmer
Mrs. Sharon Donlon
Mr. Robin Douglass
Ms. June H. Edwards
Mr. and Mrs. Edward Fishburne
Joyce and Roger Foley
Ms. Wanda A. Haines
Dr. Peter C. Kesling
Mr. and Mrs. Ronald K. Kloska
Mr. and Mrs. James Laskowski
Mr. and Mrs. James G. Lauck
Mr. and Mrs. Thomas J. Lee
Joan C. and Donald L. Leone
Ms. Heidi A. Linder
Ms. Mary Lou Linnen
Mr. and Mrs. Charles R. Loving
Mr. and Mrs. Charles Mattes
Mrs. Robert M. Moran
Mr. Al H. Nathe
Carol and Jack Regan
Dr. and Mrs. Mark Roche
Mr. Rowland G. Rose
Ms. Jane Warner
Mr. and Mrs. Paul Weaver

SUSTAINING

Dr. Joan Aldous
Mr. and Mrs. James D. Bock
Mrs. Aileen H. Borough
Mr. and Mrs. John Burgee
Mr. and Mrs. Kevin J. Butler
Mr. and Mrs. John T. Bycraft
Barbara Shields Byrum
Mr. and Mrs. Thomas Cahir
Mr. and Mrs. John Calcutt
Dr. and Mrs. Joseph J. Casey
Dr. Isabel Charles
Ms. Joyce Chisholm
Dr. and Mrs. Samuel J. Chmell
Mr. and Mrs. Don Claeys
Suzanne Cole
Ms. Diane Corbett
Mrs. Elizabeth Cullity
Mr. and Mrs. William W. Cushwa
Dr. and Mrs. Frederick K. Dean
Mr. Bill Dixon
Mr. and Mrs. Gregory Downes

Mr. Robert P. Doyle
Mr. and Mrs. William W. Dunn
Ruth E. English
Mr. Richard E. Ford
Mr. and Mrs. John C. Frieden
Dr. and Mrs. John S. Harding
Ms. Kelly Havens and Mr. Barry Baumbaugh
Charles S. Hayes
Mr. Richard D. Heman, Jr.
Dr. and Mrs. George A. Horvath
Mr. Richard J. Huether
Birgitta and Dennis Hulth
Ms. Jane E. Hunter
Ms. Brenda Johnson
Dr. and Mrs. James P. Kelly
Dr. and Mrs. Jonathan E. Kintner
Mrs. K. Frederick Kleiderer
Mr. and Mrs. Brian Lake
Mr. Gerald Lerman
Patti Lovaas
Ms. Patricia G. MacDonald
Mr. and Mrs. John F. Magrames
Dr. William B. McDonald and Ms. Joyce Rudale
Mr. and Mrs. William K. McGowan, Jr.
Capt. William O. McLean
Mr. and Mrs. Tim McTigue
Mr. and Mrs. William L. McVey
Dr. and Mrs. Anthony N. Michel
Mrs. Robert M. Moran
Mr. Brian Nordan
Mr. and Mrs. Daniel H. Passarella
Capt. King Pfeiffer
Mr. and Mrs. William R. Racine
Rita and Dick Reinbold
Mr. and Mrs. J. Peter Ritten
Dr. C. H. Rosenbaum and Ms. Mona Medow
Mr. and Mrs. Edward W. Schreck
Mr. Franklin D. Schurz, Jr.
Susan and Robert Shields
Mr. and Mrs. James Sieradzki
Mr. and Mrs. Joseph R. Skelton
Mr. and Mrs. Thomas Sopko
Mr. Steve A. Spretnjak
Mr. and Mrs. Raymond M. Stout, Jr.
Dr. and Mrs. Stephen Strycker
Mr. and Mrs. George Stump
Mr. and Mrs. Keith L. Swihart
Mr. William L. Tardani
Mr. and Mrs. Richard Trafas
Mrs. Frances M. Van Fleit
Mr. and Mrs. James C. Vanderkam
Ms. Barbara K. Warner
Kathy and Gary White
Dr. and Mrs. Craig F. Williams
John L. Young, CSC

FAMILY

Mr. and Mrs. Stephen A. Anella
Mr. and Mrs. Ira Anes
Mr. and Mrs. Daniel Beauchamp
Mr. and Mrs. Thomas J. Borger
Mr. John W. Borkowski
Dr. and Mrs. Paul F. Bosco
Mr. and Mrs. Brian Brady
Dr. P. Nacu-Brandewie
Dr. and Mrs. Richard D. Burns
Mr. and Mrs. John E. Butkovich
Mr. and Mrs. Phillip Coffey
Mr. and Mrs. Peter D. Connolly
Mr. and Mrs. James F. Cooke
Mr. and Mrs. John D. Cox
Mr. and Mrs. Paul Crowley
Mr. and Mrs. Richard Dennen
Julie Douthwaite
Dr. and Mrs. Alan Engel
Dr. and Mrs. Howard R. Engel
Kathleen Rose and Ed. Everett
Mr. and Mrs. Mauro Fonacier
Mr. and Mrs. Van E. Gates
Mr. and Mrs. Dean Goodwin
Mr. and Mrs. W. Glenn Gordon
Todd Graham and Julie Martines
Mr. and Mrs. Edward Hardig
Prof. and Mrs. Eugene Henry
Phyllis and Gordon Hostetler
Jeffery and Vickie Johnson
Ruth Kantzer
Dr. J. Robert and Dr. T. Kapacinskas
The Honorable and Mrs. Joseph Kernan
Prof. T. Kosel and Ms. R. Bell
Mr. and Mrs. Ray B. Larson
Mr. and Mrs. Clark Lonergan
Mr. and Mrs. James L. Lyphout
Mr. and Mrs. Eric Marshall
Mr. and Mrs. Donald Marti
Elizabeth McGahan
Dr. and Mrs. Stephen T. McTigue
Mr. and Mrs. Donald B. Medow
Mr. and Mrs. John W. Mihelich
Mr. and Mrs. Sam Mirkin
Mrs. June Moffett
Mr. and Mrs. John L. Morgan
Mr. and Mrs. Robert Nadai
Micheline and Norman Nilsen
Hon. Sheila O'Brien and Hon. Wayne Andersen
Ms. Jeannine Oren
Ramona Payne
Mr. and Mrs. Paul J. Polking
Rita and Dick Reinbold
Dr. J.R. Reineke

FRIENDS OF THE SNITE MUSEUM IN 2009

Ms. Sonia Rosenberg
Mr. and Mrs. Joseph Ruppe
Dr. and Mrs. David M. Sabato
Mr. and Mrs. Dennis R. Sabo
Mr. and Mrs. Wolfgang Schmidt
Prof. and Mrs. Robert P. Sedlack
Dr. and Mrs. William D. Shephard
Leah and Neil Silver
Mr. and Mrs. Charles Simon
Mr. and Mrs. Don Sporleder
Mr. and Mrs. Richard Q. Stifel
Prof. William and Mary Strieder
Ms. Mary Ellen Toll
Mr. and Mrs. Edward Trubac
Helen and James Voth
Ms. Mary Anne Wexler

ACTIVE OR INDIVIDUAL

Ms. Julie Arnott
Ms. Mary Mahank Barnes
Mr. Louis J. Behre
Mr. J. Bruce Bobick
Mrs. Rudolph S. Bottei
Mrs. Catherine Box
Ms. Mary Jane Buzolich
Ms. Amy Clifford
Mrs. Jane Dunkle
Ms. Josephine Ferguson
Ms. Laura Hammonds
Ms. Lydia Lee
Ms. Catherine McCormick
Mrs. Mary Ann McTigue
Mary Ann Moran
Mary Morgan
Carol A. Norris
Ms. Bette O'Malley
Mrs. Marie Priebe
Mr. Ethan L. Romine
Mrs. Gertrude Rubin
Ms. April Sayre
Mr. Ronald A. Schubert
Ms. Joan L. Schweiger
John J. Shields
Ms. Sonja K. Smith
Mr. Paul Stevenson
Mr. Raymond A. VanderHeyden
Mrs. Jean Wenke
Mr. Charles Wylie

SENIOR

Mrs. Ilene Alpern
Ms. Lillian Ambler
Ms. Mary A. Antonelli
Mrs. Jack H. Appleton
Marie Arch
Mr. Calvin Arnett
Mrs. Eve A. Arnett
Ms. Eileen Balestri
Ms. Nan Behre
Mr. and Mrs. Harold Berebitsky
Mrs. Barbara Bergin
Mrs. Janet Berman
Ms. Martha E. Black
Jo Ann Blazek
Dr. Leslie Bodnar
Mrs. Dorothy J. Bollinger
Mrs. F. Peter Braasch
Mrs. Eleanor R. Burke
Mrs. Gloria F. Carr
Joanne Carter
Mary Jane Chase
Mary L. Coen
Ms. Maureen Conboy
Ms. Jo Ann K. Cook
Mr. Tom Costa
Ms. Elizabeth Cotter
Ms. Elizabeth A. Craig
Ms. Audrey M. Davis
Mr. and Mrs. William Davis
Mr. Davey Dawalt
Mrs. Warren A. Deahl
Mrs. Loretta A. Despres
Mrs. Anna Maria Dits
Ms. Loretta Downes
Mrs. Marilyn Doyle
Ms. Darlene Eddy
Ms. Irene M. Engel
Mrs. Winifred Caponigri Farquhar
Sr. M. Jeanne Finske, CSC
Mrs. Shirley Flood
Ms. Norma H. Frank
Mrs. Janina Goetz
Mrs. Robert A. Grant
Mrs. Frances H. Haidler
Ms. Nancy Hain
Ms. Arlene Harlan
Mrs. Robert Havlik
Sally L. Hendricks
Mrs. Joan Henning
Ms. Mary Lou Hiatt
A. Suzanne Higdon

Ms. Roberta Hill
Ms. Kay Hokanson
Ms. Joan Jaworski
Mrs. Helga Jean
Mrs. Mary Ann Jones
Mrs. Susan Y. Kiang
Ms. Natalie H. Klein
Mrs. Mary J. Knoll
Ms. Catherine Koscielski
Mrs. Robert Kraabel
Ms. Kay Kramer
Mrs. Mary E. Kronstein
Phyllis R. Kubale
Ms. Betty Link
Ms. Lyla S. Lockhart
Elaine V. Lubbers
Ms. Phoebe Jo Lykowski
Ms. Mary Ann Matthews-Derda
Ms. Rose-Marie Merz
Ms. Marilyn Metros
Mrs. Ada C. Miller
Mrs. Selma Jean Moon
Mrs. Margaret Nelson
Elaine Nicgorski
Ms. Sara Niedbalski
Mrs. Daniel M. O'Connell
Mrs. Imelda O'Malley
Ms. Jane A. O'Malley
Ms. June Pabst
Mrs. Adele Paskin
Mrs. Margaret Peck
Mrs. Gene Pendl
Dr. Stephen R. Phelps
Mr. Robert C. Ramsey
Miss Irene Rapp
Mr. William J. Reinke
Ms. Geraldine Ritchhart
Ms. Lenore S. Roark
Ms. Julia Robinson
Grace and Gene Rodgers
Mrs. Denise B. Roemer
Sr. Mercia Scherer, CSC
Ms. Cleone Schultz
Mrs. Mary Ann Shanley
Ms. Jean Sharp
Mrs. Thomas Sheehan
Harriet B. Sherwin
Mrs. Joyce Skillern
Mrs. Patricia Skudlarek
Ms. Jan Slaby
Mr. Ted Z. Stanley
Mr. Zane P. Trinkley
Mary Nice Troyer
Mrs. Rosalind Tucker
Mr. and Mrs. Joseph Van Huffel

Mrs. Helen Voth
Mr. Robert H. Waechter
Ms. Wanda Wallis
Mrs. Margaret J. Wegner
Ms. Jeanne Weir
Mrs. Eugene Weiss
Mrs. Shirlee Wishinsky
Mrs. Miriam Wittkopf
Mrs. Gloria Wolvos
Nada Worrell
Dr. Frank Yeandel

CORPORATE DONORS

Afdent Dental Services
Art Institute of Chicago
Barnes & Thornburg LLP
Burkhart Advertising, Inc.
Cassady Neeser & Brasseur
Calumet Flexicore Corporation
CB Richard Ellis/Bradley
Centier Bank
Corson Family Foundation, Inc.
Elkhart Brass Manufacturing, Inc.
1st Source Bank
Gurley Leep Automotive Family
Hacienda Mexican Restaurants
Charles S. Hayes, Inc.
Robert J. Hiler Family Foundation
Holladay Properties
Hoosier Art Patrons
Indiana Oxygen
IOI Payroll Services, Inc.
K & M Machine Fabricating, Inc.
Donald & Marilyn Keough Foundation
Kesling Foundation
KeyBank
Leighton-Oare Foundation, Inc. - Butler Family Enterprises
Merrill Lynch
National City Bank
NIBCO INC.
Notre Dame Federal Credit Union
Praxair Distribution, Inc.
Press Ganey Associates, Inc.
Real Estate Management Corporation
RSM McGladrey, Inc.
The Robert T. Rolfs Foundation
The Ruthmere Foundation, Inc.
St. Andrew's Plaza
Schurz Communications
Steel Warehouse Co., Inc.
Teachers Credit Union
The Watson Foundation
Wells Fargo Bank, N.A.

IN MEMORIAM

For security, credit card information may only be exchanged over the phone @ (574) 631-5516, or via fax to (574) 631-8501.

Jean “Jeannie” and Russell G. “Pete” Ashbaugh, Jr.

The Museum lost two longstanding friends and benefactors when the Ashbaughs passed away this year: Pete in August and Jeannie in November. Jeannie was a Vassar graduate where she double majored in psychology and economics. Pete played Notre Dame football under Coach Frank Leahy as a halfback in the 1941 and 1942 seasons, after which he enlisted in the Army Air Corps, flying the Boeing B-52 Superfortress for three years in the Pacific theater. Following the war, Pete played football again during 1946 and 1947, when Notre Dame won consecutive national titles.

They were married in 1948 and, after Pete’s brief professional football career, they settled in Elkhart, Indiana, where they both began careers with Elkhart Brass Manufacturing Company—founded by Jean’s grandfather, A.E. Hansen, in 1902. Jean ascended to chairman of the board; Pete served as president, CEO and chairman of the board.

The Ashbaughs assisted the Snite Museum with the acquisition of a number of Mestrovic sculptures including the *(Ashbaugh) Madonna*, 1917 walnut sculpture, and *Mother*, 1926 marble sculpture acquired from the Art Institute of Chicago in 1999. The Ashbaugh Education Center and Ashbaugh Decorative Arts Gallery in the Snite Museum of Art celebrate the Ashbaugh’s generosity, including an endowment they established to support educational outreach in our community. The Ashbaughs also served Notre Dame as members of the College of Arts & Letters Advisory Council, and they faithfully attended and underwrote the Friends of the Snite Museum Annual Christmas Benefit Dinner for 27 years.



FRIENDS OF THE SNITE

Contributions to the Friends Endowment Fund

The Snite Museum of Art and its Friends membership organization gratefully acknowledge gifts in honor of, or in memory of, special individuals. Cards of acknowledgment are sent to the honorees, or the family of those memorialized.

Listed below are the tributes and memorials received from August through December 11, 2009:

In Memory of

Jean Ashbaugh from:

- Ciber Inc.
- Barbara Dillon
- Thomas and Lois Dusthimer
- Elcona Country Club
- Insight Strategic Concepts, Inc
- Maurice Pincoffs Company, Inc.
- Edna and Benjamin McCoy
- Old National Bancorp
- Mr. & Mrs. Ara and Kathleen Parseghian
- RSM McGladrey, Inc.
- Richard and Janet Scholtes
- Joan R. Shoff and family
- Mr. & Mrs. T. Shorter, T. Shorter MFG, Inc.
- The Thursday Club Members
- Arthur and Julie Zielinski

Russell and Jean Ashbaugh from:

- L. Dale and Doris Chaffee
- Robert and Patricia Kill

William Michael Roberts

from Betty Gallagher and John Snider

Diane Zeller Scherer

from Betty Gallagher and John Snider

John McNicholas Schank

from Betty Gallagher and John Snider

Theodore Zmyslo

from Betty Gallagher and John Snider

The Friends of the Snite Museum of Art

I choose to support the Snite by becoming a member of the Friends.

individual(s) _____
 firm/corporate _____
 address _____
 city _____ state _____ zip _____
 daytime phone _____ e-mail address _____

I choose to support the Friends by making a donation of \$ _____

In memory of _____
In honor of _____
A membership for _____

Gifts are acknowledged with cards sent to the family, honoree or recipient; names of donors appear in the following issue of EVENTS magazine.

please check one:

- Premium
- Director’s Circle
- Donor
- Benefactor
- Patron
- Supporting
- Sustaining
- Family
- Individual
- Senior

- \$10,000
- \$5,000
- \$1,000
- \$750
- \$500
- \$250
- \$100
- \$60
- \$40
- \$25

I have enclosed a check payable to the Friends of the Snite Museum for:

\$ _____

Please mail the check to:

The Friends of the Snite Museum of Art
 P.O. Box 368
 Notre Dame, IN 46556-0368

For security, credit card information may only be exchanged over the phone (574) 631-5516, or via fax to (574) 631-8501.

Cut along the dotted lines

MUSEUM STAFF

Douglas E. Bradley*
curator of the arts of the Americas, Africa, and Oceania

Linda Canfield
assistant to the curator of education, public programs

Dinali Cooray
assistant to the staff accountant

Gina Costa
marketing and public relations specialist

Gregory Denby*
chief preparator

Susan Fitzpatrick*
administrative assistant, Friends of the Snite Museum

Ann M. Knoll
associate director

Charles R. Loving
director and curator, George Rickey Sculpture Archive

Joanne Mack, Ph.D.
curator of Native American art

Diana Matthias*
curator of education, academic programs

Anne T. Mills*
senior staff assistant

Bethany Montagano
research curator

Steve Moriarty
Milly and Fritz Kaeser Curator of Photography

Carolyn Niemier
staff accountant

Eric Nisly
photographer, digital archivist

Rebecca Penn
assistant to the staff accountant

John Phegley*
exhibition designer

Ramiro Rodriguez
exhibition coordinator

Robert Smogor*
registrar

Jacqueline H. Welsh
curator of education, public programs

Heidi Williams
coordinator, Friends of the Snite Museum

* staff member for twenty-five years or more

HOUSEKEEPING

Nancy Dausman
Deborah Osborn

SECURITY

William E. Brackett
security coordinator

Katerina Araman

Pearlie Bowens

Leander Brown

Rita Burks

Annie Chambliss

Dan Ferry

Dennis Gaydos

Tonie Gryscha

Charles Harper

Wanda Hughes

David Jessup

Deborah Kuskye

James Luczkowski

Glenn Martin

Beverly Murphy

Robert Sikorski

Frederick Slaski

Thomas Stafford

Gerald Strabley

Ronald Suver

Dian Weller

Barbara Winquist

VOLUNTEERS

Mary Mahank Barnes

Catherine Box

Tom Box

Mary Jane Buzolich

Ann Christensen

JoAnn Cook

Jean Dennen

Ron Emanoil

Joyce Foley

Roger Foley

Emily Follas

Arlene Harlan

Birgitta Hulth

Dennis Hulth

Joan Jaworski

Betty Johannesen

Najeeb Khan

Nancy Khan

Lou Lonergan

Patricia MacDonald

Vicki McIntire

Charlotte Mittler

Thomas Mittler

Barb Phair

John Phair

Lenore Roark

Joan Schweiger

Bob Shields

Susan Shields

Joyce Stifel

Richard Stifel

Barbara Stump

Shawn Todd

Dick Trafas

MUSEUM DOCENTS

Mary Allen

Don Arenz

Suzanne Cole

Linda DeCelles

Bettie Dippo

Sharon Donlon

Lucy Emery

Mauro Fonacier

John Gibson

Arlene Harlan

Patricia Healy

Sally Hendricks

Alice Henry

Mary Jones

Sibylle Livingston

Phoebe Lykowski

Kay Marshall

Catherine McCormick

Rose-Marie Merz

Leone Michel

Jan Gardner Moore

Nancy Morgan

Runa Mozumder

Barbara Obenchain

Nancy Racine

Rita Rogers

Donna Richter

Cleone Schultz

Peggy Vaughan

Carole Walton

Helen Wellin

THE FRIENDS OF THE SNITE MUSEUM OF ART

Board of Directors

Molly Trafas, president

Gretchen Berry

Marjorie Bycraft

Gilberto Cardenas

Suzanne Cole

Anna Jean Cushwa

Ann Dean

Robin Douglass

Jane Emanoil

Phil Faccenda, Jr.

Pat Kill

Dee Ann Mattes

Tim McTigue

Sara Briggs Miller

Barb Phair

Celeste Ringuette

Valerie Sabo

Joyce Sopko

Paul W. Stevenson

Teri Stout

Mindy McIntire Todd

Amy Tyler

Kathleen Reddy White

Herb Wilson

ADVISORY COUNCIL MEMBERS

John D. Reilly, chairman

Dr. Ann Uhry Abrams

William C. Ballard, Jr.

James D. Bock

Mrs. Arthur J. Decio

Mrs. John F. Donnelly

Susan M. Driscoll

William G. Greif

Kelly Watson Hamman

Mrs. Bernard J. Hank, Jr.

Richard A. Hunt

Peter David Joralemon

Shannon M. Kephart

Thomas J. Lee

Dr. R. Stephen Lehman

Rebecca Nanovic Lin

Mrs. Virginia A. Marten

William K. McGowan, Jr.

Mrs. Richard A. McIntyre

Eileen Keough Millard

Carmen Murphy

Al H. Nathe

Dr. Morna E. O'Neill

Mary K. O'Shaughnessy

Dr. Kimerly Rorschach

Christopher Scholz

Bailey J. Siegfried

Frank E. Smurlo, Jr.

John L. Snider

Janet Unruh

Dr. James A. Welu



Snite Museum of Art
University of Notre Dame
P.O. Box 368
Notre Dame, IN 46556-0368
Change of Address Service Requested

Non-Profit
Organization
U.S. Postage
PAID
Notre Dame, IN
Permit No. 10

